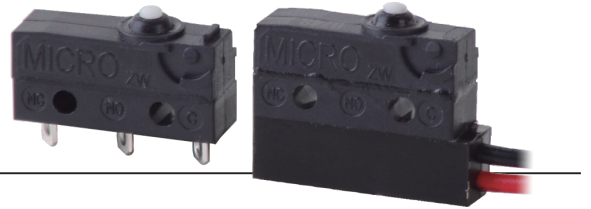


ZW 系列

小型防水防尘微动开关



■ 特点

- ◆ 防水防尘 (IP67) 设计
- ◆ 体积小, 结构紧凑
- ◆ 长寿命, 高可靠性
- ◆ 接线端子种类齐全
- ◆ 配备各种形式操作柄
- ◆ 广泛应用于各种汽车控制家用及工业控制领域

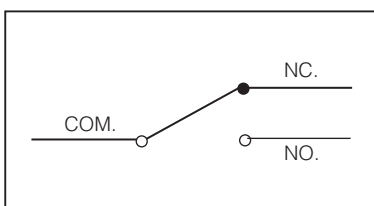
■ 应用

- ◆ 汽车
- ◆ 电话
- ◆ 空调
- ◆ 计算机
- ◆ 增湿器
- ◆ 报警器
- ◆ 计时器
- ◆ 混合器
- ◆ 切肉机
- ◆ 焊接枪
- ◆ 氩电话
- ◆ 传真机
- ◆ 游戏控制杆
- ◆ 水泵
- ◆ 汽油探测器
- ◆ 卷笔刀
- ◆ 钱币分类机
- ◆ 食品加工机
- ◆ 电切刀
- ◆ 玩具汽车
- ◆ 榨汁机
- ◆ 照明设备
- ◆ 电动煎锅

■ 特性参数

额定值	10	0.1A 125/250VAC (镀金可选)
	50	UL/cUL: 5A 125/250VAC, ENEC/CQC: 6A 125/250VAC u 25T120
操作频率	电气	10~30 次
	机械	120 次
绝缘电阻	在 500VDC 时, 100MΩ Min.	
抗电强度 (初始值)	AC 1,000V RMS (50~60Hz)	
保存湿度	85%RH Max.	
寿命	电气	6,000~50,000 次 (取决于类型)
	机械	2,000,000 次 (取决于类型)

■ 触点配置



ZW Series Micro Switch Ordering Instruction

ZW 系列微动开关订货型号指引

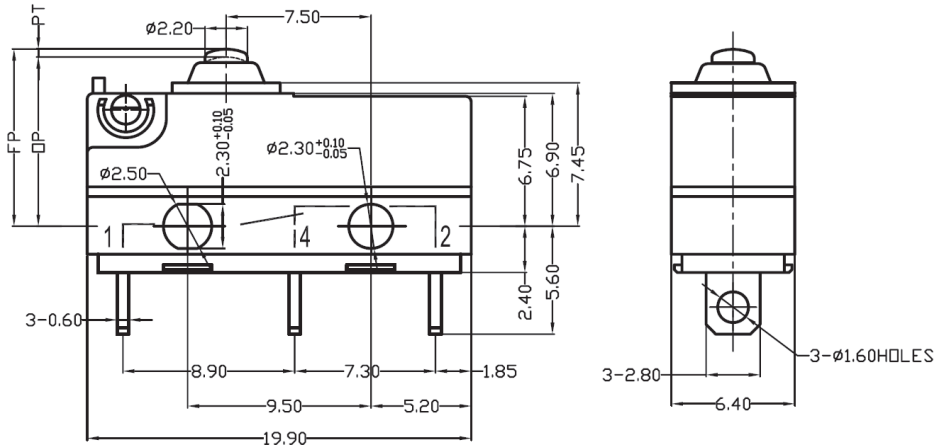
ZW	50	S	10	A	W	1	2	-	-	-	Z
Switch Type 开关类别	Electrical Rating 额定负载	Operating Force at pin Plunger, Max 操作力(最大值) 数据在不带操作柄测得	Terminal Style 端子类型	Lever Type 操作柄类型	Circuit Code 接触形式	Circuit Code 接触形式	Special Designator 特别设计代码	UL Guage (for molded lead wires type only) UL线规 (仅适用于带线型)	UL Number (for molded lead wires type only) UL号码 (仅适用于带线型)	Wires length 线长	Special Designator 特别设计代码
ZW Series Sealed Micro-Switch ZW系列微动开关	10 ENEC/CQC: 0.1A 125/250VAC 5E4 μ 25T125 IP00 and IP67 UL / cUL: 0.1A 125/250VAC 48VDC 触点镀金可选 Contact gold plate optional.	E 150gf Max (IP00) 175gf Max (IP67)	15 Solder terminals 焊接端子	A Pin Plunger 柱式按挚	D Dust proof (IP00) without lead wires 防尘型不带引线, IP00	1 SPDT 单击双投	通用型	20#	UL1007	300mm length standard lead wires 300mm标准线长	S Special code 特殊说明
	50 ENEC/CQC: 5A 125/250VAC 5E4 μ 25T120 IP00 and IP67 UL / cUL : 5A 1/8HP 125/250VAC <i>"F" force only.</i>	F 200gf Max(IP00) 300gf Max(IP67)	20 Straight PCB terminals 直PCB 端子	B Shor straight lever 17.7mm 短直柄 17.7mm	W Water proof (IP67) with lead wires 防水型IP67带引出线.	2 SPST-NC 单极单投-常闭	A Contact Gold-plated, only for ZW10. 触点镀金, 仅适用于ZW10	F 22#	C UL1430	1 280mm length 280mm长	Z Special code 特殊说明
	90 ENEC/CQC: 0.1A, 125/250VAC 48VDC 5A, 125/250VAC 10(1.5)A,125/250VAC UL / cUL : 0.1A, 125/250VAC 48VDC 5A 1/8HP 125/250VAC 10.1A 1/4HP 125/250VAC <i>"F" force only. IP00 only.</i>		70 110# Quick Connect terminals: 2.8mmX0.6mm 110#快速连接端子2.8mmX0.6mm	C Standard straight lever 19.7mm 标准直手柄19.7mm		3 SPST-NO 单极单投-常开	D Special suit for High DC rating 特别用于大直流电流	G 24#	D UL1061
			90 Lead wires downwards (500mm length) 导线型, 底面出线, 线长500mm	D Long straight lever, 25.8mm 长直柄25.8mm			Others 其他	H 26#	E UL1330		
			91 Lead wires on right side (Opposite Pin plunger side), 500mm length. 导线型, 右面(按挚相对侧)出线, 线长500mm.	F Roller lever 15.7mm 滚轮手柄15.7mm				I 28#	F AVSS		
			92 Lead wires on left side(Pin plunger side), 500mm length. 导线型, 左面(按挚侧)出线, 线长500mm	H simulated Roller lever 18.9mm 小型模拟滚轮手柄18.9mm				J 30#	G UL3266		
			99 Special terminals 特殊端子	J Extra long straight lever 55.9mm 超长直柄55.9				K 32#	H UL1332		
				S Special lever 特殊手柄				L 34#			



Terminal Style 端子类型

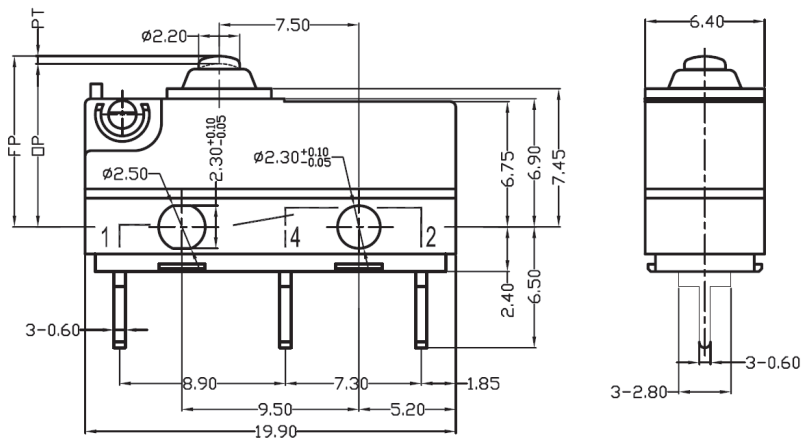
15#: Solder terminals

焊接端子



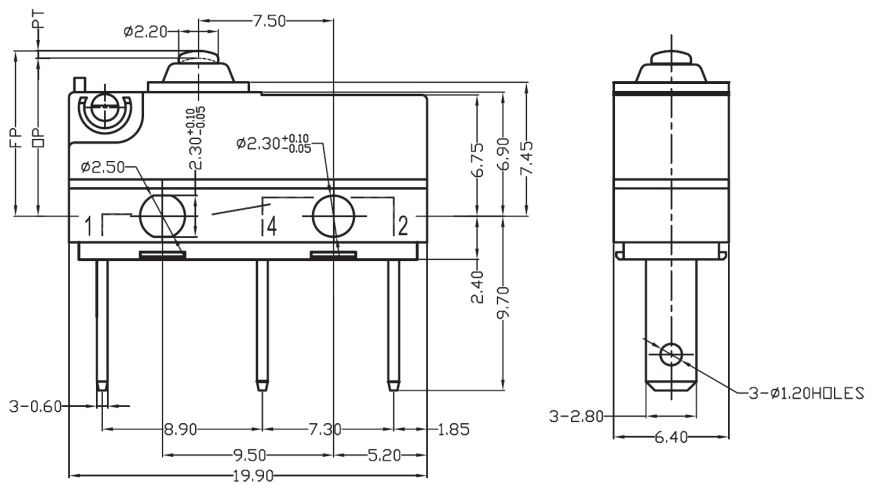
20#: Straight PCB terminals

直PCB端子



70#: 110# Quick Connect terminals: 2.8mmX0.6mm

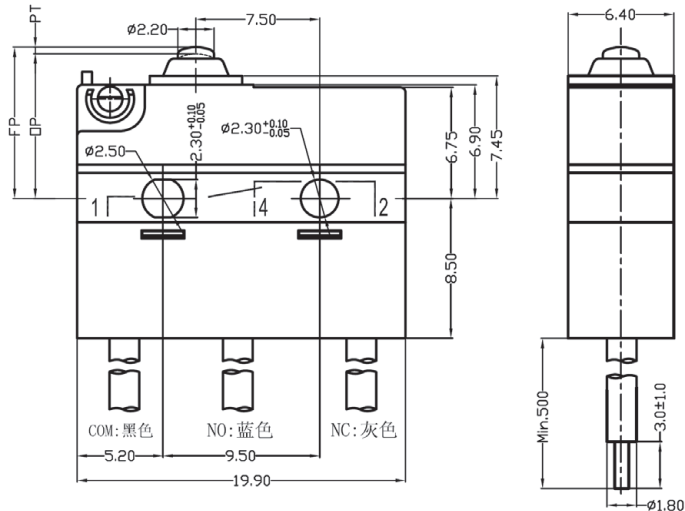
110#快速连接端子2.8mmX0.6mm



Terminal Style 端子类型

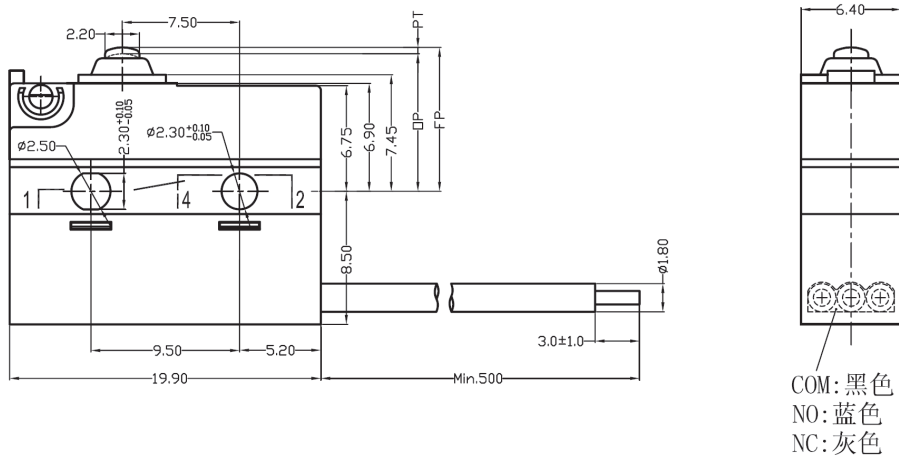
90#: Lead wires downwards (500mm length)

导线型, 底面出线, 线长500mm



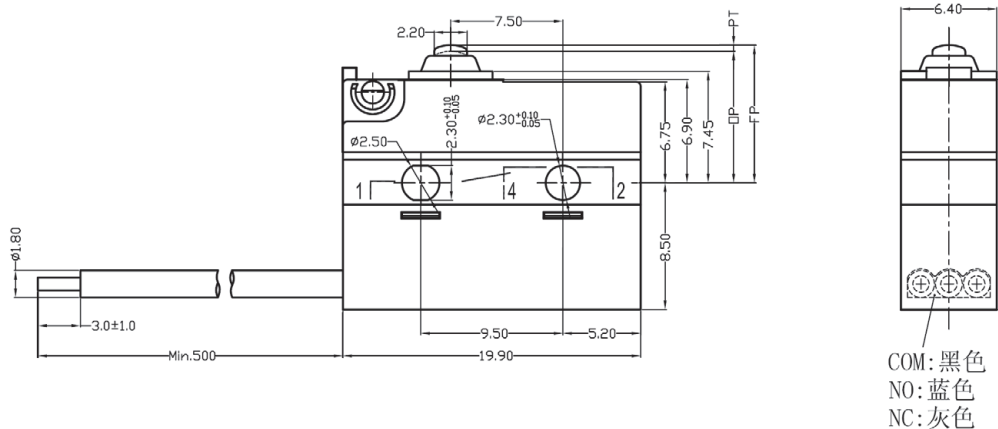
91#: Lead wires on right side (Opposite Pin plunger side), 500mm length.

导线型, 右面(按挚相对侧)出线, 线长500mm.



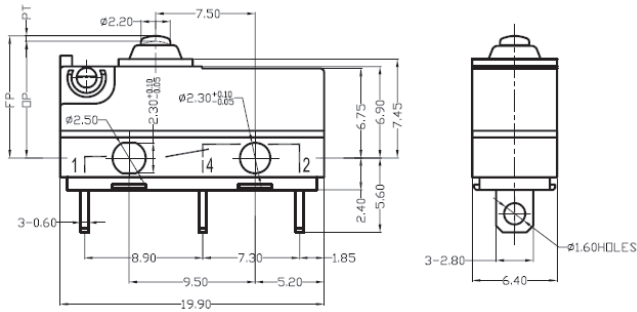
92#: Lead wires on left side (Pin plunger side), 500mm length.

导线型, 左面(按挚侧)出线, 线长500mm

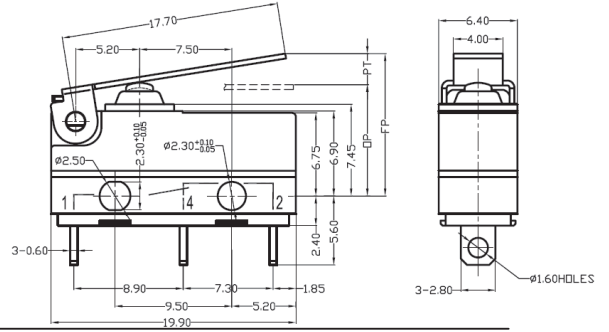


Lever Type 操作柄类型

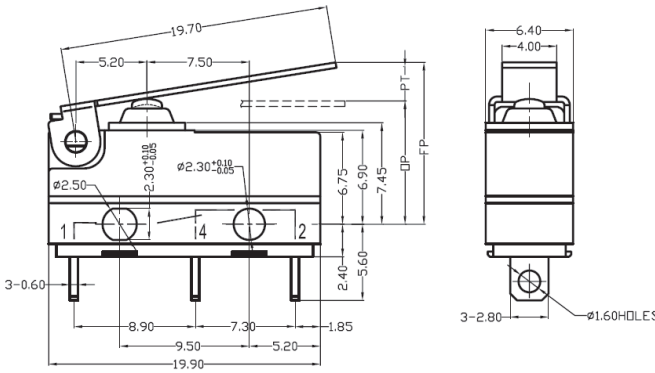
A# : Pin Plunger
柱式按挚



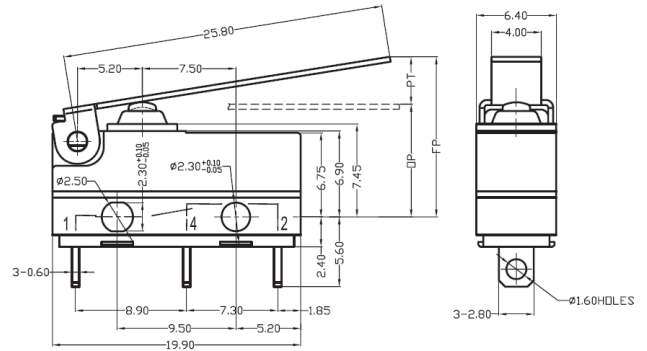
B#: Short straight lever 17.7mm
短直柄 17.7mm



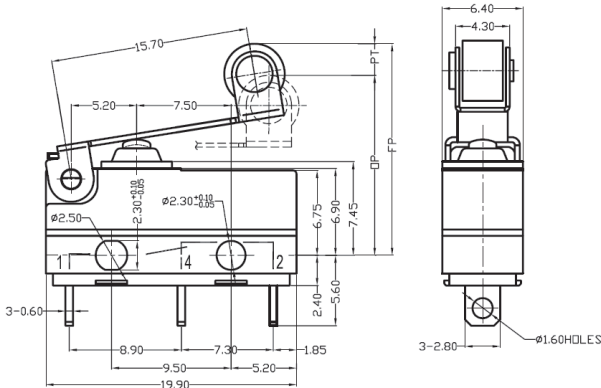
C#: Standard straight lever 19.7mm
标准直手柄 19.7mm



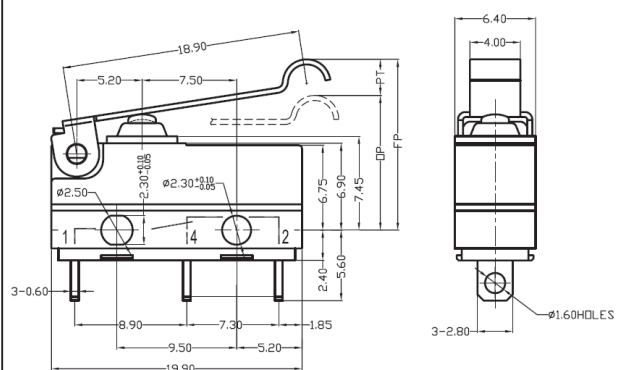
D# : Long straight lever, 25.8mm
长直柄 25.8mm



F# : Roller lever 15.7mm
滚轮手柄 15.7mm



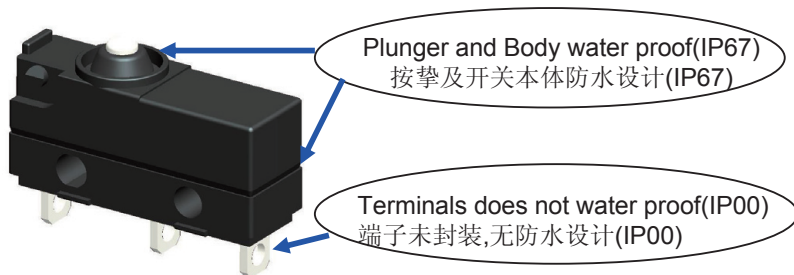
H# : simulated Roller lever 18.9mm
小型模拟滚轮手柄 18.9mm



IP grade / IP 等级

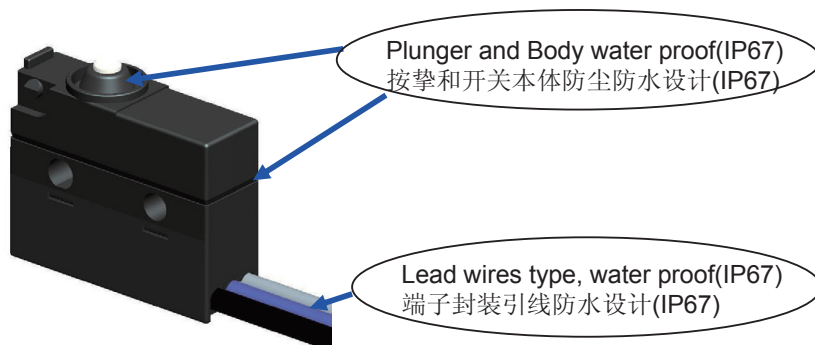
D#:

Plunger and Body Water proof(IP67); terminals does not water proof(IP00), without lead wires
 按挚及开关本体防尘防水(IP67), 端子无防尘防水设计(IP00)



W#:

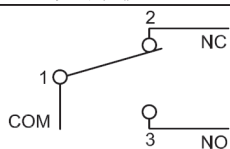
Water proof (IP67) with lead wires
 防水型IP67带引出线.



Circuit Code 接触形式

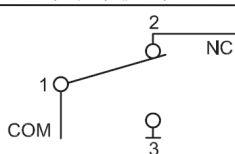
1#:

SPDT / 单击双投



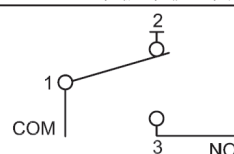
2#:

SPST-NC / 单级单投-常闭

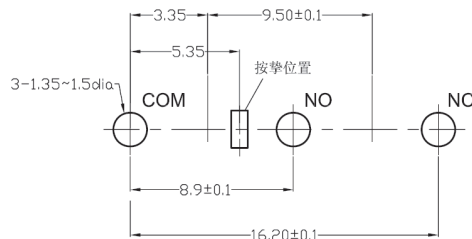
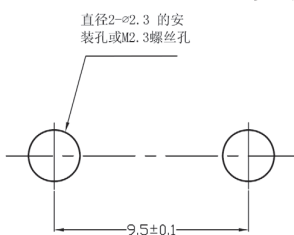


3#:

SPST-NO / 单级单投-常开



Mounting hole dimension / 安装孔尺寸



Space between Mounting pin or screws
 定位柱间距

Straight PCB terminals mounting hole
 直PCB端子安装孔

Typical model characters 常用型号参数表

Part Number 型号	Actuators Types 操作柄类型	Operating Characteristics 操作参数							
		OF Max. (g)	RF Min. (g)	PT Max. (mm)	OT Min. (mm)	DT Max. (mm)	FP Max. (mm)	OP (mm)	
ZW□□AD1-Z		F	200	50	1.2	0.6	0.2	9.35	8.4±0.3
		E	150	30	1.2	0.6	0.2	9.35	8.4±0.3
ZW□□BD1-Z		F	90	15	4.3	0.6	0.7	12	8.8±1.2
		E	50	8	4.3	0.6	0.7	12	8.8±1.2
ZW□□CD1-Z		F	75	13	4.8	0.7	0.8	12.5	8.8±1.3
		E	50	6	4.8	0.7	0.8	12.5	8.8±1.3

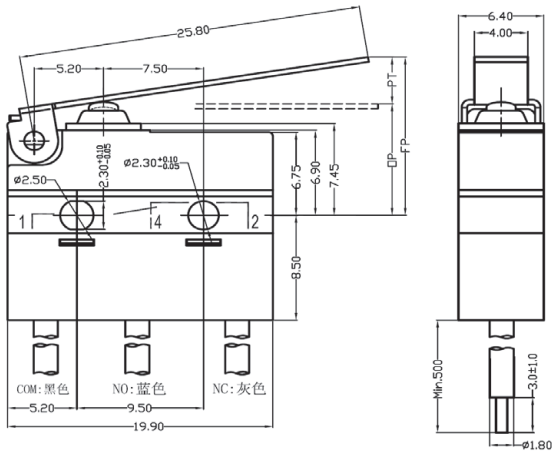
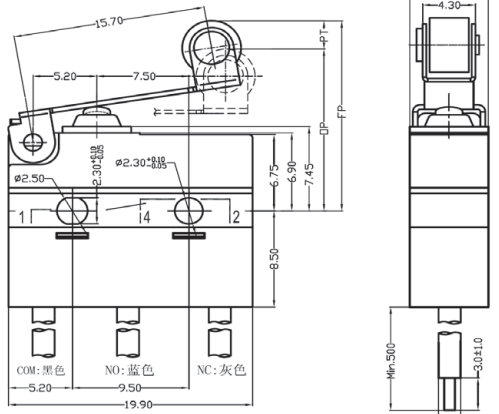
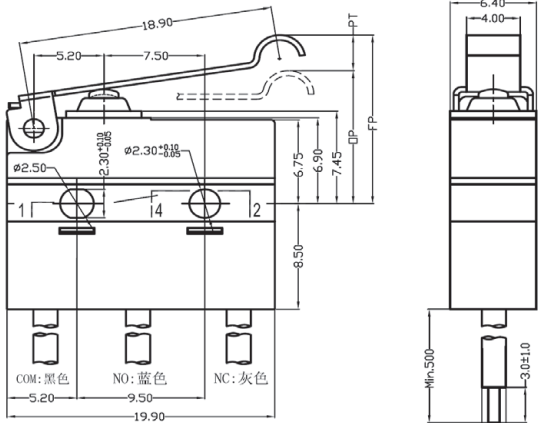
Typical model characters 常用型号参数表

Part Number 型号	Actuators Types 操作柄类型	Operating Characteristics 操作参数							
		OF Max. (g)	RF Min. (g)	PT Max. (mm)	OT Min. (mm)	DT Max. (mm)	FP Max. (mm)	OP (mm)	
ZW□□□DD1-Z		F	55	8	6.3	1	1	13.5	8.8±1.8
		E	40	5	6.3	1	1	13.5	8.8±1.8
ZW□□□FD1-Z		F	75	12	4.6	0.7	0.8	15.5	11.8±1.5
		E	50	6	4.6	0.7	0.8	15.5	11.8±1.5
ZW□□□HD1-Z		F	85	15	4.3	0.6	0.7	17.5	14.5±1.1
		E	65	10	4.3	0.6	0.7	17.5	14.5±1.1

Typical model characters 常用型号参数表

Part Number 型号	Actuators Types 操作柄类型	Operating Characteristics 操作参数							
		OF Max. (g)	RF Min. (g)	PT Max. (mm)	OT Min. (mm)	DT Max. (mm)	FP Max. (mm)	OP (mm)	
ZW□□□AW1-Z	<p>Technical drawing of the ZW□□□AW1-Z actuator. It shows a top view with dimensions: 6.75, 6.90, 7.45, 8.50, 19.90, 9.50, 5.20, 7.50, 6.40, 2.30, 2.50, 2.20, 1, 14, 2. A side view shows a height of 6.40 mm and a diameter of 1.80 mm. A detail view shows a length of 3.0±1.0 mm and a minimum length of 5.00 mm. Terminal colors are specified as COM: 黑色, NO: 蓝色, NC: 灰色.</p>	F	300	70	1.2	0.6	0.2	9.35	8.4±0.3
ZW□□□BW1-Z	<p>Technical drawing of the ZW□□□BW1-Z actuator. It shows a top view with dimensions: 17.70, 5.20, 7.50, 6.75, 6.90, 7.45, 8.50, 19.90, 9.50, 5.20, 7.50, 6.40, 2.30, 2.50, 1, 14, 2. A side view shows a height of 6.40 mm and a diameter of 1.80 mm. A detail view shows a length of 3.0±1.0 mm and a minimum length of 5.00 mm. Terminal colors are specified as COM: 黑色, NO: 蓝色, NC: 灰色.</p>	F	105	20	4.3	0.6	0.7	12	8.8±1.2
ZW□□□CW1-Z	<p>Technical drawing of the ZW□□□CW1-Z actuator. It shows a top view with dimensions: 19.70, 5.20, 7.50, 6.75, 6.90, 7.45, 8.50, 19.90, 9.50, 5.20, 7.50, 6.40, 2.30, 2.50, 1, 14, 2. A side view shows a height of 6.40 mm and a diameter of 1.80 mm. A detail view shows a length of 3.0±1.0 mm and a minimum length of 5.00 mm. Terminal colors are specified as COM: 黑色, NO: 蓝色, NC: 灰色.</p>	F	95	18	4.8	0.7	0.8	12.5	8.8±1.3
		E	150	30	1.2	0.6	0.2	9.35	8.4±0.3
		E	50	8	4.3	0.6	0.7	12	8.8±1.2
		E	50	6	4.8	0.7	0.8	12.5	8.8±1.3

Typical model characters 常用型号参数表

Part Number 型号	Actuators Types 操作柄类型	Operating Characteristics 操作参数							
		OF Max. (g)	RF Min. (g)	PT Max. (mm)	OT Min. (mm)	DT Max. (mm)	FP Max. (mm)	OP (mm)	
ZW□□□DW1-Z		F	75	13	6.3	1	1	13.5	8.8±1.8
		E	40	5	6.3	1	1	13.5	8.8±1.8
ZW□□□FW1-Z		F	95	18	4.6	0.7	0.8	15.5	11.8±1.5
		E	50	6	4.6	0.7	0.8	15.5	11.8±1.5
ZW□□□HW1-Z		F	110	25	4.3	0.6	0.7	17.5	14.5±1.1
		E	65	10	4.3	0.6	0.7	17.5	14.5±1.1