

Timer  
**ZA1/1 - Delay-on operate with 1 immediate / 1 delayed changeover**  
 17.5mm housing



**Application**

Timing control

**Description**

The ZA1/1 timer – **delay-on operate** offers 16 different timing intervals in one unit. The timing intervals can be adjusted with DIP switches on the front panel of the relay. The timer can operate on either 230V AC using terminals A1 and A2 or 24V DC using terminals A3 and A2. The green LED indicates the connection to the power supply.

**Function**

The timing starts with the connection of the power supply. The instantaneous changeover switches immediately to its operating position. Upon completion of the selected timing cycle, the delayed changeover switches to its work position. This is indicated by the red LED. The continuous switching status remains until the power supply is disconnected.

**Options**

Other timing ranges and voltages available upon request.

**Part number**  
 011064

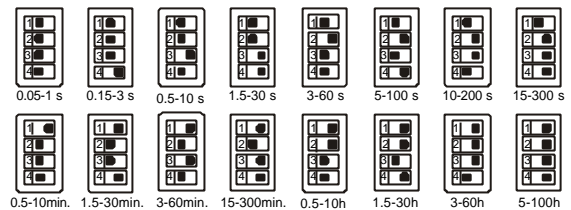
**ZA1/1 1 immediate + 1 delayed**  
**16 Timing ranges / 1 + 1 Changeovers**

**Timing ranges**

16 timing ranges adjustable with DIP switches

0.05 – 1 s	0.5 – 10 min
0.15 – 3 s	1.5 – 30 min
0.5 – 10 s	3 – 60 min
1.5 – 30 s	15 – 300 min
3 – 60 s	0.5 – 10 h
5 – 100 s	1.5 – 30 h
10 – 200 s	3 – 60 h
15 – 300 s	5 – 100 h

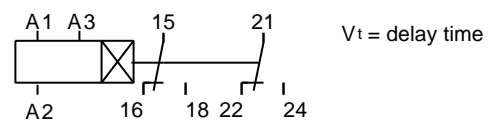
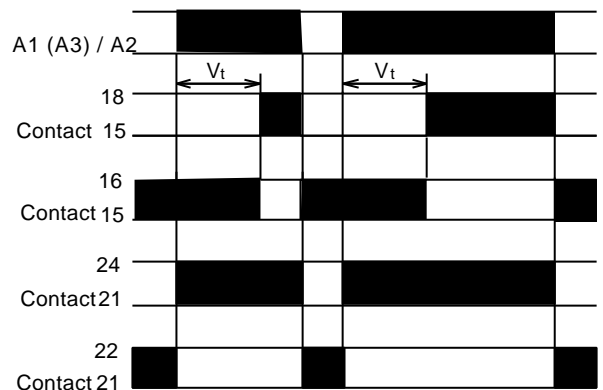
**DIP switch adjustments**



**Approvals**



**Function diagram**



**Mounting**

Snap-on mounting using a standard DIN rail EN 50022. The unit is designed to allow side-by-side mounting, with an ambient temperature of < 60°C.

Timer  
**ZA1/1 - Delay-on operate with 1 immediate / 1 delayed changeover**  
 17.5mm housing

### Technical data

#### Supply

Supply voltage           A1/A2: 230V AC     -15 / +10%  
                               A3 / A2: 24V AC/DC   -15 / +10%

Frequency range:           0 / 50 ... 60Hz  
 Power consumption:       approx. 1.5W / DC  
                                   approx. 6VA / AC  
 Operating mode:           continuous  
 Supply voltage influence: < 0.01% over voltage range

Temperature influence:     < 0.01%/°C  
 Recovery time:            < 100ms  
 Repetitive accuracy:      ± 0.2%

#### Operating indicators

Supply voltage:            LED, green  
 Relay in working position: LED, red

#### Contact

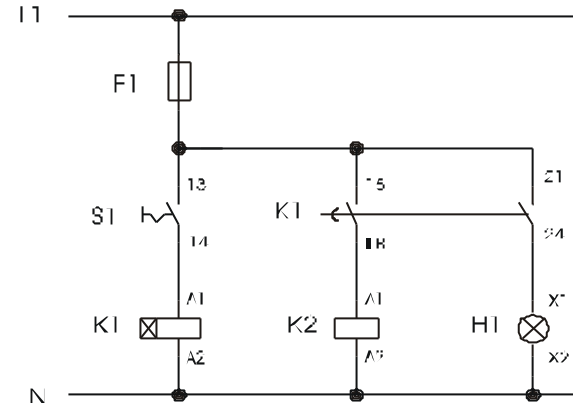
Number of changeovers  
                                   immediate:     1  
                                   delayed:       1

Contact material:           AgSnO<sub>2</sub>  
 maximum switching voltage: 250V AC  
 maximum switching current: 4A  
 Drop-off time of switching element: approx. 20ms  
 Mechanical life:            30 Mio.  
 Electrical life (with rated load): 0.8 Mio.

#### General data

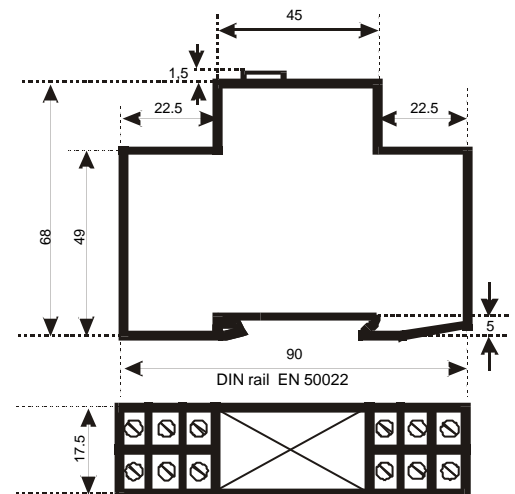
Ambient temperature:     - 25 ... + 60°C  
 Climate influence:        VDE 0435T.2021  
 Mounting position:       any  
 Vibration resistance:     VDE 0435T.2021  
 Test voltage:             2.5kV  
 Isolation group:         VDE 0110 Group C 250  
 Protection class:         Terminals IP 20  
                               Housing IP 40  
 Connection terminals:     Crosshead screws; M3.5 self-opening  
 Connection cross section: Multi-strand wire with wire sleeves 2 x 2.5mm<sup>2</sup>  
                                   single-wire 2 x 2.5mm<sup>2</sup>  
 Finger touch protection: VDE 0106T.100 and VBG4  
 Mounting:                 Symmetrical DIN rail EN 50022  
 Dimensions l x w x h:     90mm x 17.5mm x 69.5mm  
 Weight:                    104g

### Example



When the contact S1 closes, H1 lights immediately and K2 energizes after the selected delay time.

### Dimensions



### Connections

The terminal assignment for the connections is located on the front panel of the relay. **Reading the front panel from top to bottom**, the connections are in the following order:

LED side	Right:	nc - 16 - A3
	Left:	18 - 15 - A1
Potentiometer side	Right:	nc - 21 - 24
	Left:	nc - A2 - 22

上海悦中电气设备有限公司  
 上海恒通路360号一天下大厦24C  
 TEL: 021-62246890  
 FAX: 021-52240873  
 Http://www.skjd.cn  
 E-mail: shskjd@126.com