

Features:

- Small size of only 10.20 x 3.39 x 1.59" / 259 x 86 x 40.5mm
- Voltage Programming (Ideal for Battery Management)
- Hot swap - Fault Tolerant
- Active current Sharing
- Remote ON/OFF
- Extended temperature range
- UL, CSA, CE Certification
- EMI Level B



FEATURES	BENEFITS
High Power Density	Leaves plenty of room for your applications
Constant Output Power	Ideally suited for battery back-up & power distribution applications
Scalability up to 2500 Watts	Allows flexibility with minimum investment
1U x 2U high form factor	Minimize space required for power needs

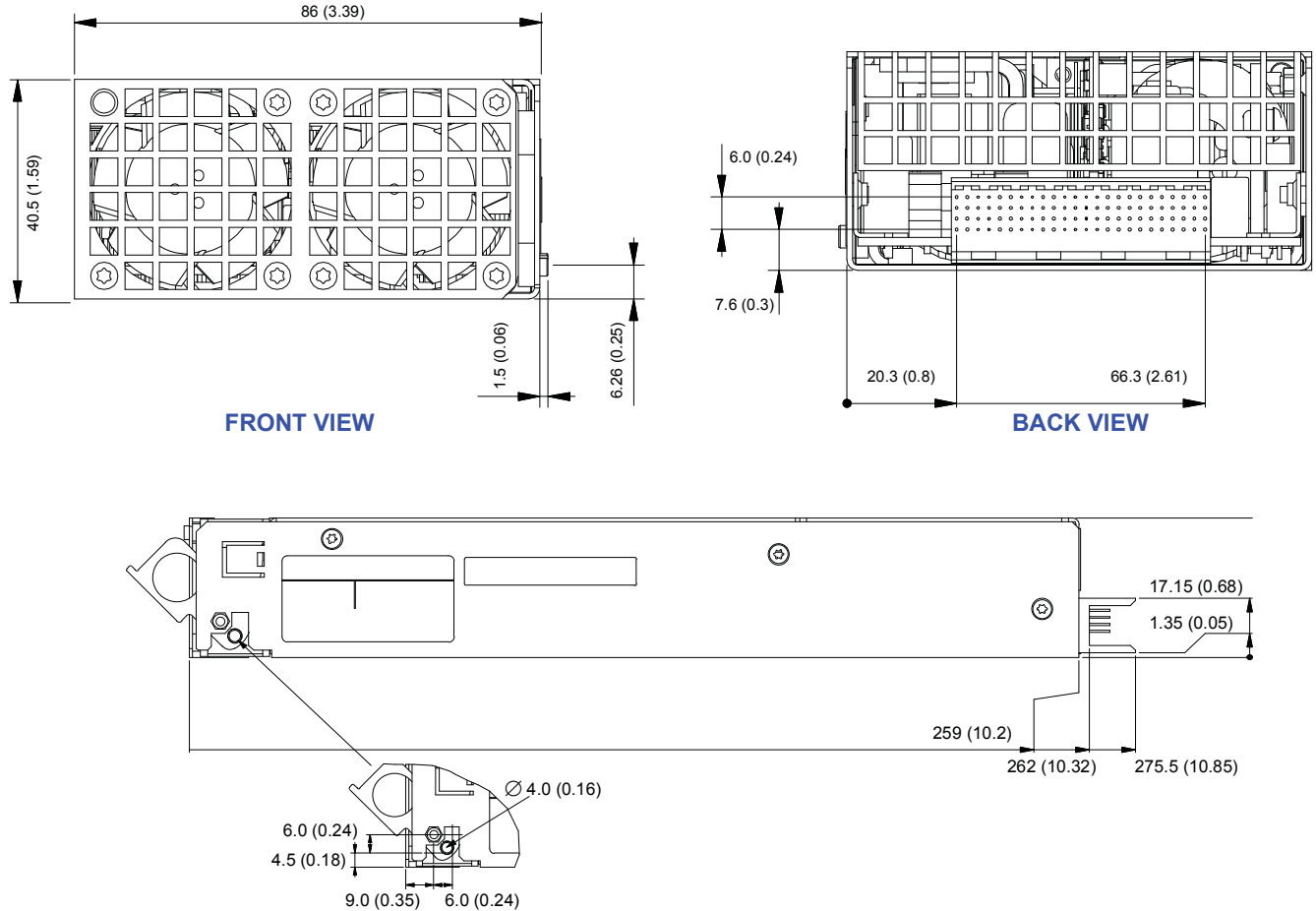
KEY MARKETS & APPLICATIONS

- Distributed power
- Access Nodes
- Satellite Hubs
- RF Amplifiers
- Base Stations
- Network Equipment
- Wireless / Cellular
- Central Office Switching
- PCS Installations
- Transmission Equipment

SPECIFICATIONS	500 Watt -54V Rectifier Module
Input Voltage Range	90-264 VAC, 47-63 Hz
Input Current Maximum	6.9A @ 90VAC, 2.6A @ 230 VAC, full Load
Inrush Current	20A max. peak (per ETS 300 132-1 and bellcore specifications)
Input Protection	Single 10 Amp Fuse in line
Power Factor	0.99 typical complies with IEC555, EN60555-2, EN61000-3-2
Efficiency	85% typical at 230 VAC Full Load Operation (including ORing diode)
Output Power	500W Constant Power
Output Voltage Range	-40 ~ -59VDC with remote programming, factory set at -54 VDC
Output Current	9.25A @ -54VDC, 12.5A @ -40VDC
Output Regulation	±0.5% Load Regulation, ±0.1% Line Regulation
Output Ripple & Noise	Complies with ETS300 132-2, 32dBnc. Bandwidth: 25Hz - 20kHz. 2mVrms pk-pk with 0.1μF ceramic and 10μF electrolytic caps
Transient Response	Overshoot 1V max. Recovery time:
Start-Up Time	1sec typical (max. 3sec)
Hold-Up Time	10msec at full load
Remote on/off	ON if >3V or open; OFF if <1V (max. sink 1mA) Open collector type
Current Limit Protection	120% of I-Nominal
Short Circuit Protection	25 Amp Maximum
Over Voltage Protection	-59.5 VDC
Operating Temperature	-20°C to +70°C. power derating above 55°C at 10W per °C (-40°C start-up)
Over Temperature Protection	Non latching; protection active at 110°C internal temperature, restart at 95°C (typical)
Cooling	Fan cooled front to back; variable speed
EMI	Class B (FCC and CISPR compliant) - EN55022 level B, CE marked, Telecordia GR-63-CORE
LED Indicators	LED: DC good (green)
Controls and Signals	Load sharing, Remote ON/OFF, DC fault, Current Monitor, Over temperature protection
Shock & Vibration	IEC68-2-27, MIL-STD-810E
Isolation	Input to Ground:1500VAC, Input to Output:3000VAC
Dimensions	10.20 (L) x 3.39 (W) x 1.59" (H) / 259 (L) x 86 (W) x 40.5mm (H)
Weight	2.8 lbs / 1.35kgs

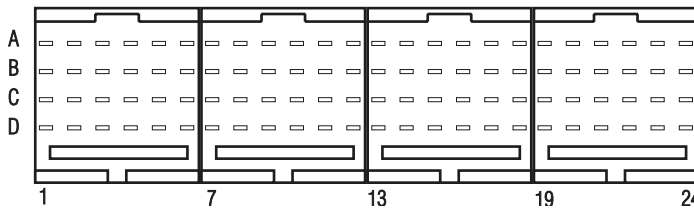
Specifications listed assume 25°C Ambient Operating Temperature and Full Load Operation unless otherwise specified. This product is qualified for use in OEM equipment and is not appropriate for stand-alone operation. The information contained within this specification is believed to be true and correct at the time of publication, however, Cherokee International accepts no responsibility for consequences arising from printing errors or inaccuracies. The information and specifications contained herein are subject to change without notice.

OUTLINE DRAWING



CONNECTOR

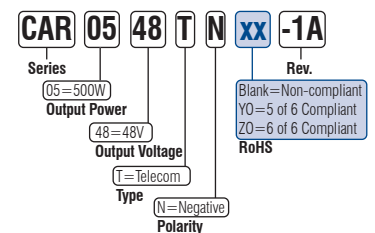
Metral F receptable-64 CTS-STB Part nr. HM1S43FRR460H6P = straight version for PCB
Metral F receptable-64 CTS-PF Part nr. HM1F43FDP459H6P = right angled version for PCB
Manufacturer : Framatome Connectors



Pin Assignments:

	1	2	3	4	5	6	7	8	9	10	11	12	13	14	15	16	17	18	19	20	21	22	23	24
A															INHIBIT	GROUND	ISHARE							
B																N/C								
C	EARTH		N/C		LINE		N/C		NEUTRAL		N/C				IMONITOR	REMOTE ON/OFF	OVP			-48 VDC				
D															DC FAULT	OTP	N/C							-48 VDC RETURN

PART NUMBER DEFINITION GUIDE:



Specifications listed assume 25°C Ambient Operating Temperature and Full Load Operation unless otherwise specified. This product is qualified for use in OEM equipment and is not appropriate for stand-alone operation. The information contained within this specification is believed to be true and correct at the time of publication, however, Cherokee International accepts no responsibility for consequences arising from printing errors or inaccuracies. The information and specifications contained herein are subject to change without notice.