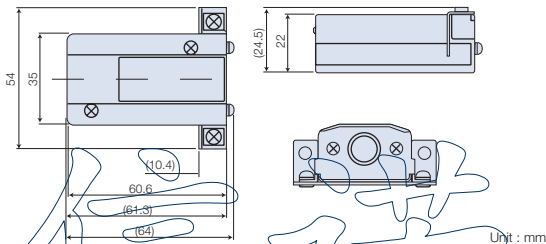


Accessories

DZ51 (Relay adapter) For connections of DG-B, DL-BR, DL-B and DT12/32N/P* to LG, LH and LY displays

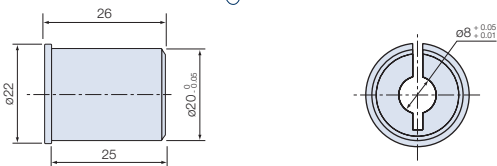


To connect the DT12/32N/P, use the DZ51 in combination with the MT10 detector.



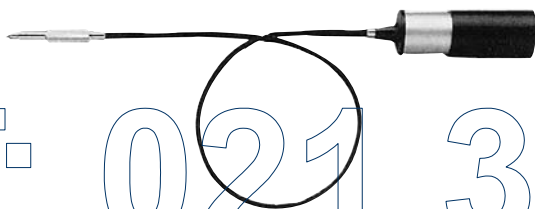
Unit : mm

DZ-811 Bushing (for mounting a U60A or a DE30BR to a DZ-501 stand)

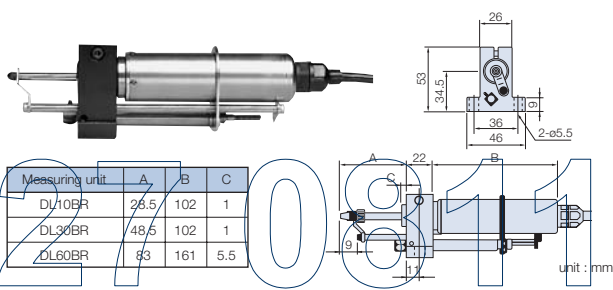


Unit : mm

DZ173 Air release (for DE12BR/30BR, U Series)



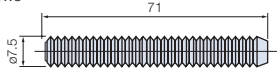
DZ175-010 Air Lifter (for DL10BR) -030 (for DL30BR) -060 (for DL60BR)



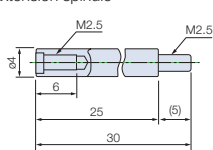
Unit : mm

DZ301 Bellows set (for DL330B, DE30BR)

Bellows



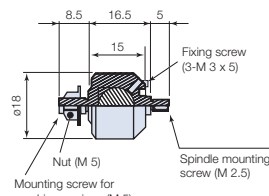
Extension spindle



•With the extension spindle attached, the spindle is extended by 25 mm and the measuring force increases by about 0.3 N.

Unit : mm

DZ-191 Coupling



Unit : mm

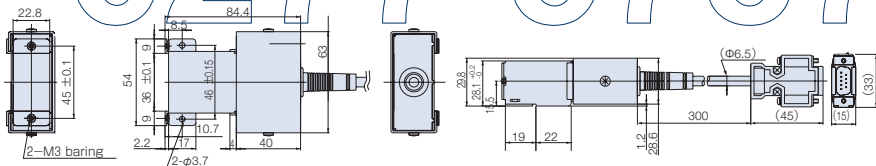
SZ70-1 Adapter

SZ70-1 is required for connecting the following scale units and counters:

Gauge unit: DE-BR Series, DG-B Series

Counter: LY71 and LY72

* Adapter DZ51 is also required



Unit : mm

*Please refer to p54 for the details of the screw.