

## BOX™ Series

### Features

The box and terminal block are made of PBT resin displaying excellent environmental performance  
 The box can be installed on and removed from the DIN 35mm rail instantly  
 The protective class IP-65 (IEC) structure enables direct installation under adverse environment condition  
 Many variety of box and cover

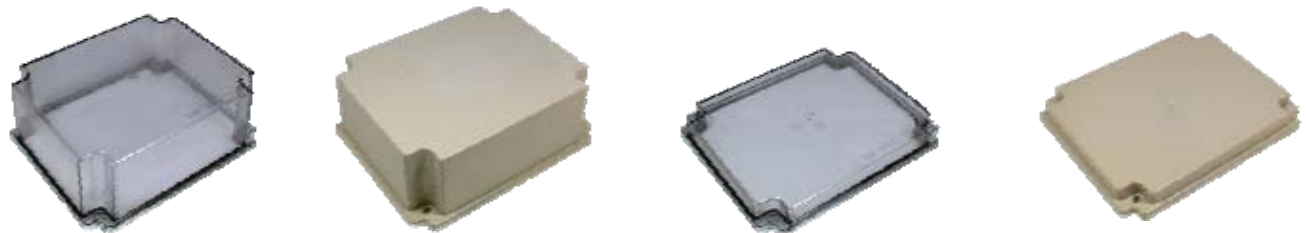
### Body material

PBT UL-94 V-0



### Features Cover

We have two types of cover, high type and low type  
 We offer two types of material, transparent type and opaque type



### Cover material

|                  |                |
|------------------|----------------|
| Transparent type | PC UL94 V - 2  |
| Opaque type      | PBT UL94 V - 0 |
| Screw            | SUS            |
| Gasket           | NBR            |

### Features Terminal Blocks

The terminal block is detachable  
 The Ultra-UP terminal block assures easy connection  
 Small-footprint terminal. It is more than 25% smaller than traditional BOX™C terminal block.

### Body material

PBT UL-94 V-0



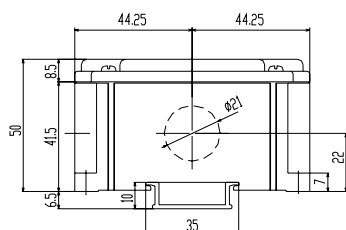
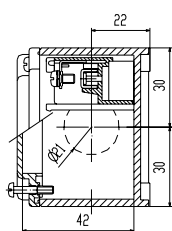
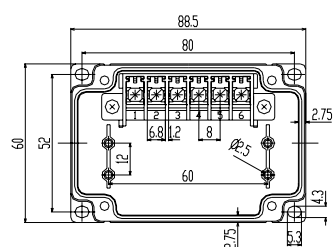
## BOXTM-61-F S

## Ratings

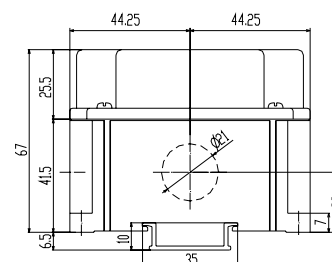
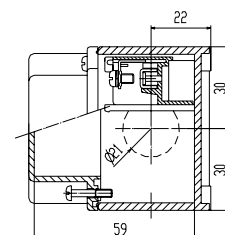
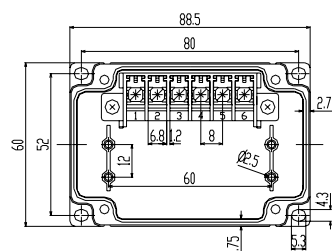


|                          |                                   |
|--------------------------|-----------------------------------|
| Rated voltage            | 600V                              |
| Rated current            | 15A                               |
| Withstand voltage        | 2500V/1 minute                    |
| Insulation resistance    | 100M or above(with DC500V megger) |
| Applicable wire          | 2.0mm <sup>2</sup> / MAX          |
| Screw                    | M3.5×6.7L                         |
| Standard clamping torque | 1.4N·m                            |
| Operating temperature    | - 25 ~ + 100                      |

## Low cover type



## High cover type



Please order Body and Cover separately

## Three types of body



BOXTM-61-F0S0



BOXTM-61-F1S0



BOXTM-61-F0S2

## Four types of cover



BOXTM-6TC-L1



BOXTM-6TC-LC



BOXTM-6TC-HI



BOXTM-6TC-HC

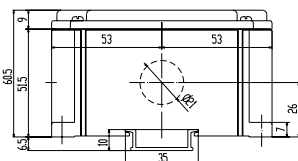
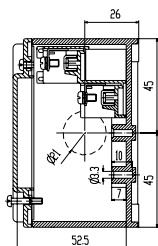
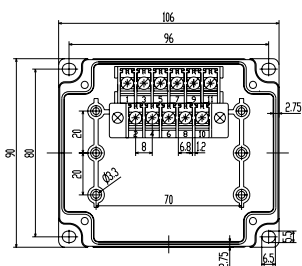
**BOXTM-111-F S**



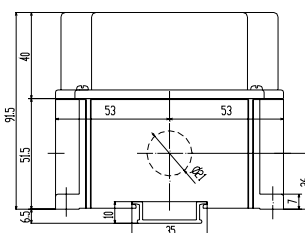
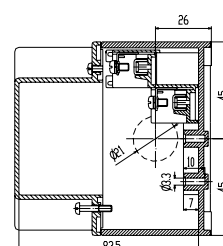
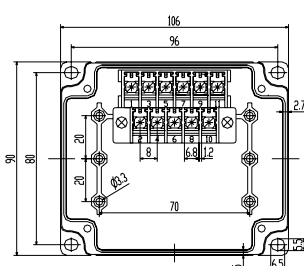
## Ratings

|                          |                                   |
|--------------------------|-----------------------------------|
| Rated voltage            | 600V                              |
| Rated current            | 15A                               |
| Withstand voltage        | 2500V/1 minute                    |
| Insulation resistance    | 100M or above(with DC500V megger) |
| Applicable wire          | 2.0mm <sup>2</sup> / MAX          |
| Screw                    | M3.5×6.7L                         |
| Standard clamping torque | 1.4N·m                            |
| Operating temperature    | - 25 ~ + 100                      |

### Low cover type



### High cover type



**Please order Body and Cover separately**

### Three types of body



**BOXTM-111-F0S0**



**BOXTM-111-F2S0**

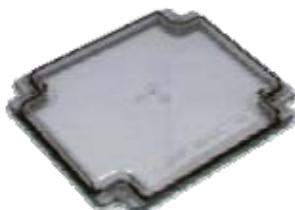


**BOXTM-111-F0S2**

## Four types of cover



**BOXTM-11TC-L1**

**BOXTM-11TC-LC****BOXTM-11TC-HI**

BOXTM-11TC-HC

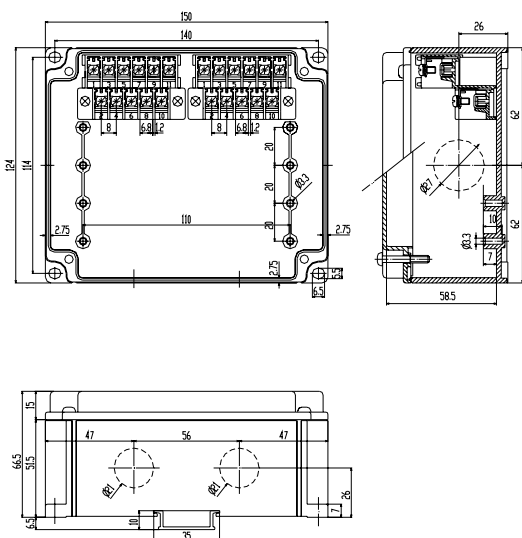
## BOXTM-221-F S

## Ratings

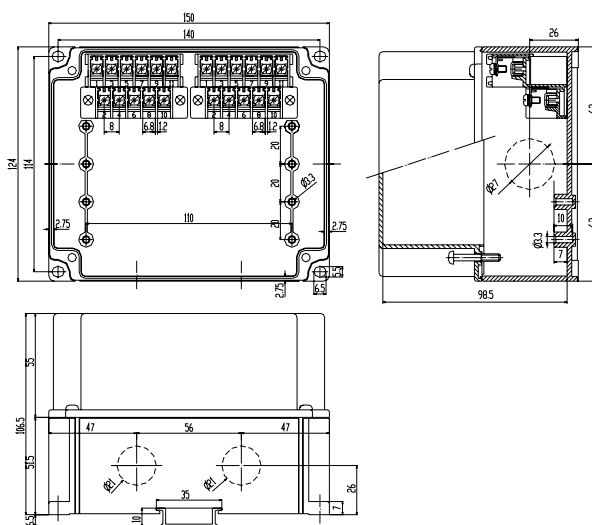


|                          |                                   |
|--------------------------|-----------------------------------|
| Rated voltage            | 600V                              |
| Rated current            | 15A                               |
| Withstand voltage        | 2500V/1 minute                    |
| Insulation resistance    | 100M or above(with DC500V megger) |
| Applicable wire          | 2.0mm <sup>2</sup> / MAX          |
| Screw                    | M3.5×6.7L                         |
| Standard clamping torque | 1.4N·m                            |
| Operating temperature    | - 25 ~ + 100                      |

## Low cover type



## High cover type



Please order Body and Cover separately

## Three types of body



BOXTM-221-F0S0



BOXTM-221-F1S0



BOXTM-221-F0S2

## Four types of cover



BOXTM-22TC-L1



BOXTM-22TC-LC



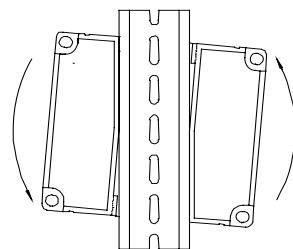
BOXTM-22TC-HI



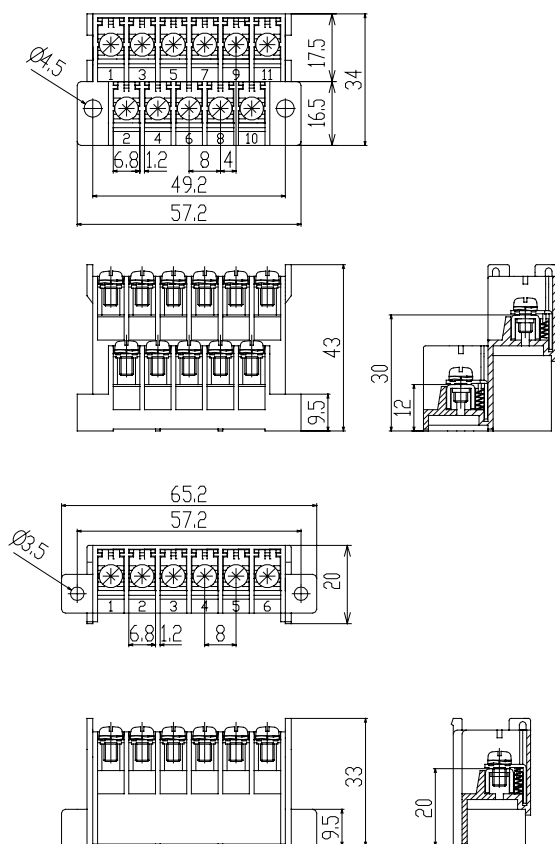
BOXTM-22TC-HC

The box can be installed on and removed from the DIN 35mm rail  
instantly

See the picture on the right on how to install on and remove from the rail



Terminal blocks Drawing



Ratings

|                       |                                |
|-----------------------|--------------------------------|
| Rated voltage         | 600V                           |
| Rated current         | 15A                            |
| Withstand voltage     | AC2500V / 1 minute             |
| Insulation resistance | 100M above(with DC500V megger) |
| Applicable wire       | 2.0mm <sup>2</sup> / MAX       |
| Screw                 | M3.5x6.7L                      |
| Clamping torque       | 1.4N·m                         |
| Temperature           | - 25 to + 100                  |

Specifications

| Parts     | Material | Size      | Finishing | Note     |
|-----------|----------|-----------|-----------|----------|
| Terminal  | PBT      |           |           | UL94 V-0 |
| Conductor | C2680R   | t = 1.0   | Ni        |          |
| Screw     | SWCH     | M3.5x6.7L | Zn        |          |
| UP Washer | SPCC     | t = 0.8   | Zn        |          |
| Spring    | SUS      |           |           |          |

Applicable crimp terminal

