

E
B
A
R
A

Standard Pump Division



Water, Wastewater & Commercial Pumps



Over 30 years of U.S. direct service; nearly 100 years of engineering & manufacturing expertise.

Standard Pump Division



EBARA International Corporation (EIC) Standard Pump Division, located in Rock Hill, SC is the US sales and service subsidiary of EBARA Corporation, Japan. With 53 subsidiaries in 17 countries and annual sales exceeding \$5B, EBARA Corporation is one of the world's largest, leading pump manufacturers. The EIC Standard Pump Division offers a full product line in both cast iron and stainless steel pumps.

With horsepower ranges up to 800 HP and capacities to 100,000 GPM, EIC Standard Pump Division's cast iron submersible pumps meet a wide range of industrial, municipal, flood control, and residential water and wastewater applications. The cast iron line of pumps includes submersible sewage, submersible sump, semi-vortex, vortex, grinder, non-clog, and dry pit models.

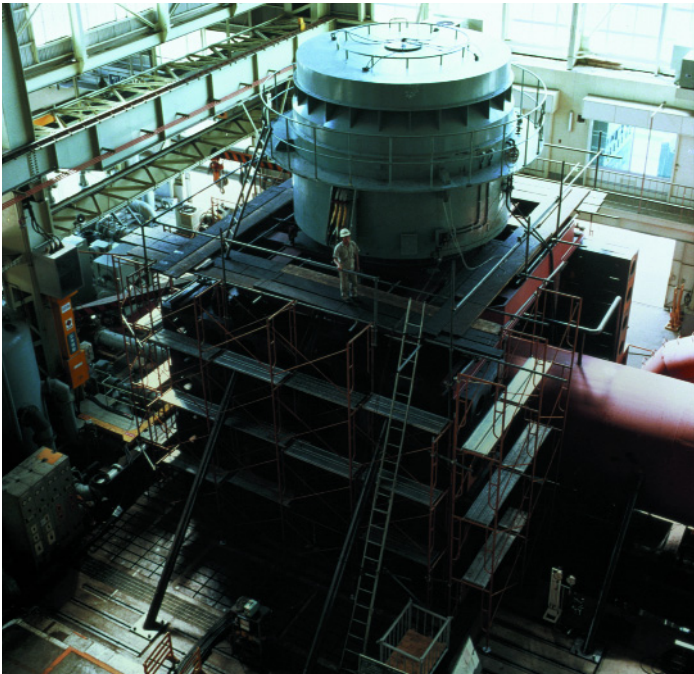
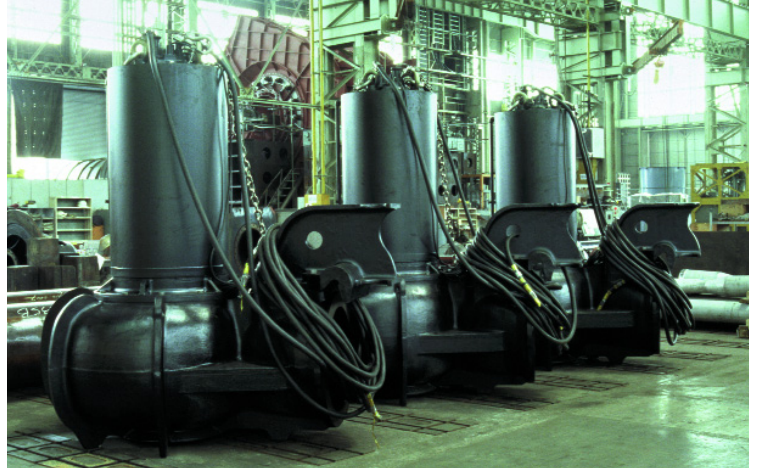
EIC offers a comprehensive line of corrosion resistant formed stainless steel pumps that include end suction centrifugal, multistage, and submersible sump, effluent, and sewage pumps.



EIC Standard Pump Division maintains inventory that allows it to assemble, test, and ship 1/2 to 60 HP cast iron submersible pumps in 5 to 14 working days, and as well, offer a 24-hour Quick Ship program on most stainless steel pumps and parts. EIC Standard Pump also serves as EBARA Corporation's worldwide Custom Service Center to assist customers in replacement of parts or complete pumps and motors.

EBARA Corporation

EBARA Corporation is viewed as a leading international manufacturer of rotating and process equipment, as well as an engineering firm active in research and development, project design, and construction. The variety of pump types and sizes produced by EBARA is tremendous ranging from fractional horsepower recirculation pumps to vertical mixed flow pumps with horsepowers into the thousands.



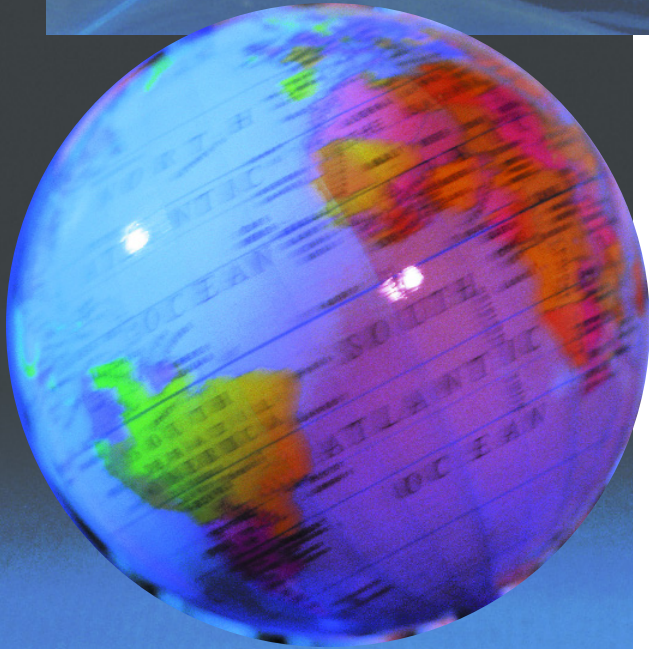
EBARA's engineering and manufacturing capabilities are best demonstrated by the Haneda manufacturing plant which also serves as headquarters for EBARA Corporation. The plant operates under ISO 9000 and uses an integrated and highly efficient quality control system. The Haneda plant has one of the largest test facilities in the world capable of delivering up to 500,000 GPM with shop drivers up to 14,500 HP. EBARA's H-series of cast iron pumps are manufactured at the Haneda plant.

EBARA's Fujisawa plant is one of the most technologically advanced manufacturing plants for the mass production of small size pumps; including the D-series of cast iron pumps.

EBARA developed technology to pressure bulge form stainless steel pump components. The resulting pumps offer superior quality, precise dimensions, increased efficiencies, lighter weights, greater strength, and exceptional value. The EBARA Italia plant (located in Cles, Italy) is equipped with state-of-the-art computer controlled pressure forming and processing equipment that now produces over 55,000 pumps per month.



EBARA Fact Sheet



US Location: EBARA International Corporation
Standard Pump Division
Rock Hill, SC

Established: 1980

Regional locations: 10

Products: Submersible cast iron
Stainless steel centrifugal

Applications:

- Water
- Wastewater
- Sewage
- Sump
- Effluent
- Dewatering
- Flood control

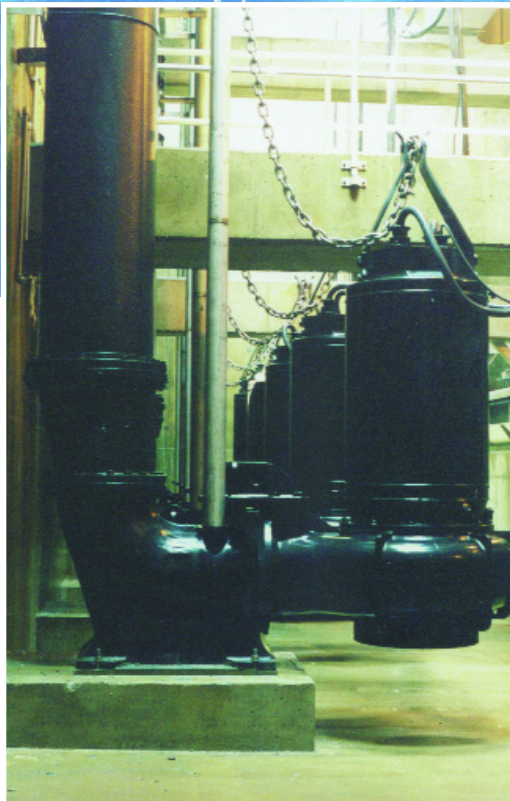
Scope of services:

- Sales
- Assembly
- Technical specifications and assistance
- Testing
- Warehouse
- Quick Ship program
- Worldwide Custom Service Center (obsolete pump and/or parts)

Headquarters: Haneda, Japan

Established: 1912

Subsidiaries: 53



*Influent relief pump station installation, Chattanooga, TN
photo courtesy of Consolidated Technologies, Inc.*

Commercial Pumps



Model 3U/3UB

Pro Steel end suction

Applications

- Plant services
- Water supply systems
- Water reclamation and treatment
- Liquid transfer
- Temperature control

Specifications

Suction Size:	2" to 3"	Discharge Size:	1 1/4" to 2 1/2"
Range of HP:	to 30 HP		
Capacity:	to 750 GPM		
Head:	to 250 ft.		
Liquid:	Clean water		



Model JEU

Pro Steel self priming

Applications

- Plant services
- Water supply systems
- Pressure boosting
- Ultrapure water systems
- Water reclamation and treatment

Specifications

Suction Size:	1 1/4"	Discharge Size:	1"
Range of HP:	to 1 1/2 HP		
Capacity:	to 18.5 GPM		
Head:	to 190 ft.		
Liquid:	Clean water		



Model EVMU/EVMUG

Pro Steel high pressure

Applications

- Water treatment
- Boiler feed
- HVAC
- Water boosting systems
- High pressure cleaning
- Washing systems

Specifications

Suction Size:	1 1/4" to 4"	Discharge Size:	1 1/4" to 4"
Range of HP:	to 50 HP		
Capacity:	to 390 GPM		
Head:	to 930 ft.		
Liquid:	Clean water		

Commercial Pumps



Model CDU, CDX

Pro Steel end suction

Applications

- Plant services
- Water supply systems
- Liquid transfer
- Ultrapure water systems
- Water reclamation and treatment

Specifications

Suction Size:	1 $\frac{1}{4}$ " to 1 $\frac{1}{2}$ "	Discharge Size:	1"
Range of HP:	to 3 HP		
Capacity:	to 95 GPM		
Head:	to 245 ft.		
Liquid:	Clean water		



Model 2CDX, 2CDU

Pro Steel two-stage end suction

Applications

- Plant services
- Water supply systems
- Liquid transfer
- Ultrapure water systems
- Water reclamation and treatment

Specifications

Suction Size:	1 $\frac{1}{4}$ " to 1 $\frac{1}{2}$ "	Discharge Size:	1"
Range of HP:	$\frac{3}{4}$ to 5 HP		
Capacity:	65 GPM		
Head:	245 ft.		
Liquid:	Clean water		



Model DWO

Pro Steel open impeller end suction

Applications

- Food Process
- Beverage Process
- Dirty liquid handling
- OEM equipment application
- Water reclamation and treatment

Specifications

Suction Size:	2" to 2 $\frac{1}{2}$ "	Discharge Size:	2"
Range of HP:	1.5 to 4 HP		
Capacity:	to 250 GPM		
Head:	35 to 65 ft.		
Liquid:	suitable for suspended solids in dirty water to $\frac{3}{4}$ " (spherical)		

Water & Wastewater/Commercial



Model EPD, EPPD

Pro Drainer – sump, drainage

Applications

- Drainage (basements, sumps, excavation)
- Seepage (residential, commercial, industrial)
- Effluent and containment transfer
- Emptying (pools, water storage structures)

Specifications

Discharge Size: 1¼" to 1½"

Range of HP: to 1½ HP

Capacity: to 88 GPM

Head: to 62 ft.

Max. solid dia.: ¾"

Single and three phase models; manual or automatic



Model DWU, DWXU

Dominator – small sump, effluent

Applications

- Wastewater with suspended solids
- Residential, commercial, and industrial applications

Specifications

Discharge Size: 2"

Range of HP: to 3 HP

Capacity: to 240 GPM

Head: to 75 ft.

Max. solid dia.: 2"

Single and three phase models; manual or automatic



Model DMLU, CMLU

Submersible water/wastewater

Applications

- Commercial/Industrial water and wastewater
- Drainage (household, industrial)
- Dewatering

Specifications

Size: 3", 4", 6"

Range of HP: 3 to 30 HP

Capacity: to 1345 GPM

Head: to 136 ft.

Max. solid dia.: 3"

Three phase (only) models available

Water & Wastewater



Model DSU, DSHU

Submersible sump

Applications

- Watering
- Dewatering
- Drainage
- Construction

Specifications

Size: 2", 3", 4"

Range of HP: to 10 HP

Capacity: to 390 GPM

Head: to 126 ft.

Single and three phase models available



Model DVSU, DVSHU

Submersible semi-vortex sewage

Applications

- Water
- Wastewater
- Drainage

Specifications

Size: 2", 3"

Range of HP: to 5 HP

Capacity: to 250 GPM

Head: to 90 ft.

Max. solid dia.: 2 $\frac{1}{4}$ "

Single and three phase models available



Model DLU

Water/Wastewater submersible sump

Applications

- Sewage
- Drainage (household, industrial)
- Irrigation

Specifications

Size: 2", 3", 4"

Range of HP: to 5 HP

Capacity: to 400 GPM

Head: to 66 ft.

Max. solid dia.: 3"

Single and three phase models available

Water & Wastewater



Model DVU

Submersible vortex non-clog

Applications

- Sewage
- Drainage (household, industrial)
- Stockbreeding
- Solid handling
- Industrial/municipal water and wastewater

Specifications

Size: 2", 3", 4"

Range of HP: to 5 HP

Capacity: to 430 GPM

Head: to 66 ft.

Max. solid dia.: 4"

Single and three phase models available



Model DGUII, DGFU

Submersible grinder

Applications

- Small scale pressurized sewage transfer systems
- Drainage transfer
- Commercial/Household sewage and drainage transfer

Specifications

Size: 2"

Range of HP: to 5 HP

Capacity: to 80 GPM

Head: to 150 ft.

FM explosion proof available



Model DLFU

Submersible non-clog

Applications

- Industrial/Municipal water and wastewater
- Flood control

Specifications

Size: 2" to 12"

Range of HP: 2 to 60 HP

Capacity: to 4000 GPM

Head: to 243 ft.

Max. solid dia.: 3 1/4"

FM explosion proof available

Water & Wastewater



Model DVFU

Water/Wastewater vortex submersible non-clog

Applications

- Sewage
- Drainage (household, industrial)
- Stockbreeding
- Solid handling
- Industrial/municipal water and wastewater

Specifications

Size: 2" to 6"

Range of HP: 2 to 30 HP

Capacity: to 1200 GPM

Head: to 121 ft.

Max. solid dia.: 5"

FM explosion proof available



Model DDLFU

Water/Wastewater dry pit non-clog

Applications

- Industrial water and wastewater
- Municipal water and wastewater

Specifications

Size: 4" to 12"

Range of HP: to 60 HP

Capacity: to 4000 GPM

Head: to 243 ft.

Max. solid dia.: 3¼"

FM explosion proof available



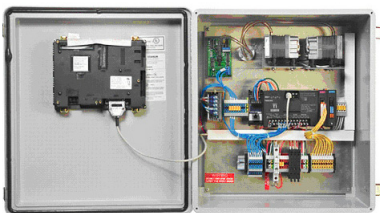
Station Boss

Water/Wastewater flow control system

Adjust pump flow to meet system requirements, thereby increasing pump station capacity and improving efficiencies

Features

- Bubbler, Transducer or Float Operation
- User Friendly Screen Operation
- Plug and Play VFD Operation
- Pump continually trims to system curve
- Unlimited starts per hour
- Automatic reverse on startup at 150% torque
- Allows 3-Phase pumps to be operated from 1-phase power feed
- Controls up to 4 pumps
- Optimum Energy Controller



Water & Wastewater



Model DSC3

Large Sewage/Wastewater submersible non-clog

Applications

- Industrial/Municipal water and wastewater
 - Flood control
-

Specifications

Size:	6" to 24"
Range of HP:	to 800 HP
Capacity:	to 35,000 GPM
Head:	to 300 ft.
Max. solid dia.:	8 1/8"

FM explosion proof available



Model DSZ3

Large Sewage/Wastewater submersible propeller

Applications

- Municipal effluent and process systems
 - Flood control
 - Amusement parks
-

Specifications

Size:	24" to 60"
Range of HP:	to 800 HP
Capacity:	to 55,000 GPM
Head:	to 50 ft.

FM explosion proof available



Control Panels

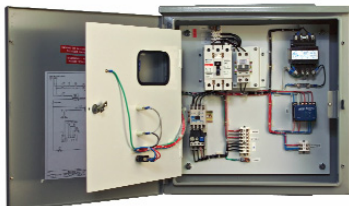
Basic, Standard, or Custom

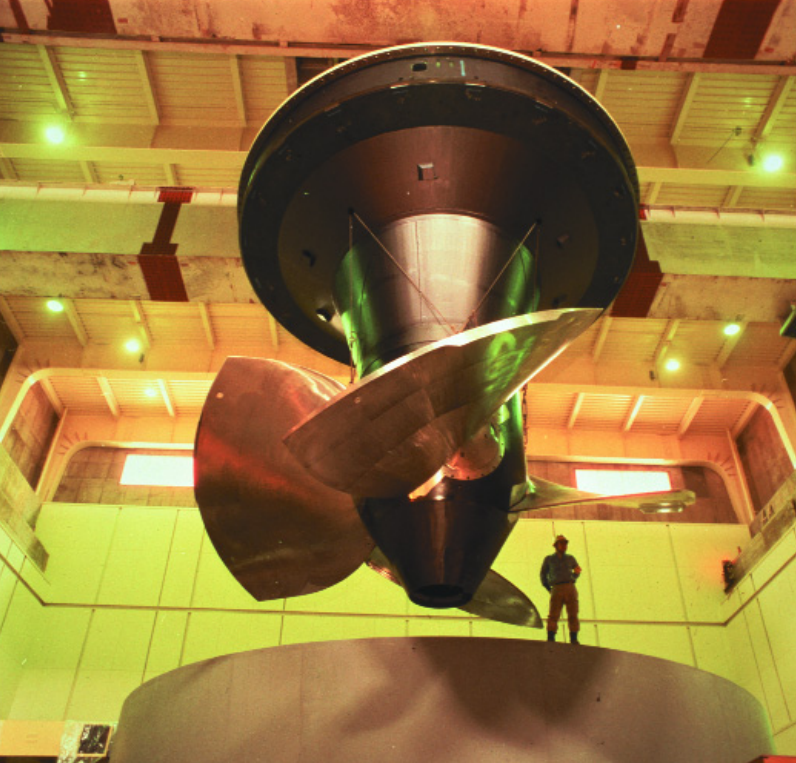
Applications

- Industrial/Municipal water and wastewater
-

Features

- All Nema Rated Enclosures
 - IEC or Nema Starters
 - Separate alarm and control circuits
 - Build to Engineers Specifications
 - Build to Customers Specifications
 - Components are UL Listed
 - UL 508A Certified
 - UL 698A Certified
-





Contact information:

**EBARA International Corporation
Standard Pump Division**

1651 Cedar Line Drive
Rock Hill, SC 29730

t (803) 327 5005

f (803) 327 5097

info@pumpsebara.com

www.pumpsebara.com



EBARA International Corporation

Standard Pump Division

1651 Cedar Line Drive • Rock Hill, SC 29730 • (t) 803 327 5005 • (f) 803 327 5097

info@pumpsebara.com • www.pumpsebara.com

© 2000 EBARA International Corporation

EIC2000 1104