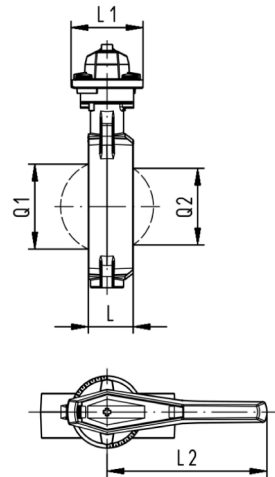
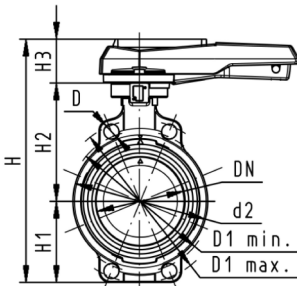


# GF Piping Systems Datasheet

valid from:  
5/15/06

## Butterfly valves

### Butterfly valve type 567 PP-H Hand lever with ratchet settings



**Model:**

- Connecting dimension: ISO 7005 PN 10, EN 1092 PN 10, DIN 2501 PN 10, ANSI B 16.5 Class 150, BS 1560: 1989, BS 4504, JIS B 2220
- Overall length according to EN 558-1, ISO 5752

d [mm]	DN [mm]	Inch	PN	kv-value ( $\Delta p=1$ bar) [l/min]	EPDM Code	FPM Code	kg
63	50	2	10	1470	<b>167 567 002</b>	<b>167 567 022</b>	0.969
75	65	2 ½	10	2200	<b>167 567 003</b>	<b>167 567 023</b>	1.061
90	80	3	10	3000	<b>167 567 004</b>	<b>167 567 024</b>	1.191
110	100	4	10	6500	<b>167 567 005</b>	<b>167 567 025</b>	1.751
140	125	5	10	11500	<b>167 567 006</b>	<b>167 567 026</b>	2.199
160	150	6	10	16600	<b>167 567 007</b>	<b>167 567 027</b>	2.989
225	200	8	10	39600	<b>167 567 008</b>	<b>167 567 028</b>	4.706

d [mm]	D [mm]	D1 min. [mm]	D1 max. [mm]	d2 [mm]	H [mm]	H1 [mm]	H2 [mm]	H3 [mm]	L [mm]	L1 [mm]	L2 [mm]	Q1 [mm]	Q2 [mm]
63	19	120.0	125.0	104	264	77	134	54	45	106	205	40	
75	19	139.7	145.0	115	277	83	140	54	46	106	205	54	35
90	19	150.0	160.0	131	289	89	146	54	49	106	205	67	50
110	19	175.0	190.5	161	325	104	167	55	56	106	255	88	74
140	23	210.0	215.9	187	352	117	181	55	64	106	255	113	97
160	24	241.3	241.3	215	373	130	189	55	72	106	255	139	123
225	23	290.0	295.0	267	435	158	210	67	73	140	408	178	169

The technical data are not binding and not expressly warranted characteristics of the goods. They are subject to change. Our General Conditions of Sale apply.

Georg Fischer Rohrleitungssysteme AG, Postfach, CH-8201 Schaffhausen/Switzerland  
 Phone +41 -(0)52-631 1111  
 e-mail: [info.ps@georgfischer.com](mailto:info.ps@georgfischer.com)  
 Internet: <http://www.piping.georgfischer.com>