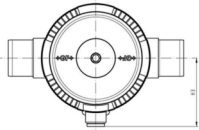
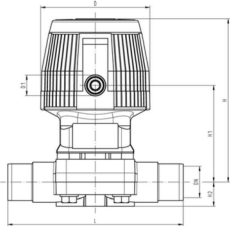


PVC-U metric

Diaphragm valves pneumatic

Diaphragm valve DIASTAR Eco PVC-U FC (Fail safe to close)

With solvent cement spigots metric



Model:

- Working pressure 6 bar one side

d [mm]	DN [mm]	PN	kv-value ($\Delta p=1$ bar) [l/min]	EPDM Code	EUR	kg
20	15	6	72	199 024 001	on request	0.513
25	20	6	120	199 024 002	on request	1.035
32	25	6	238	199 024 003	on request	1.271
40	32	6	341	199 024 004	on request	1.900
50	40	6	460	199 024 005	on request	2.469
63	50	6	685	199 024 006	on request	3.102

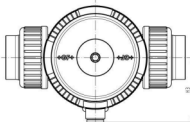
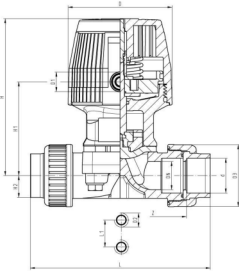
d [mm]	D [mm]	D1_G [inch]	D2 (M)	L [mm]	L1 [mm]	H [mm]	H1 [mm]	H2 [mm]	H3 [mm]	Lift = Hx [mm]
20	68	1/8	M6	124	25	99	59	14	44	8
25	96	1/8	M6	144	25	130	71	18	56	10
32	96	1/8	M6	154	25	143	85	21	56	12
40	120	1/8	M8	174	45	170	97	26	68	14
50	120	1/8	M8	194	45	182	109	33	68	16
63	120	1/8	M8	224	45	199	126	39	68	16

PF 3 39 212

Diaphragm valve DIASTAR Eco PVC-U

FC (Fail safe to close)

Unions with solvent cement socket metric



Model:

- Working pressure 6 bar one side

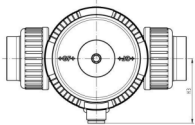
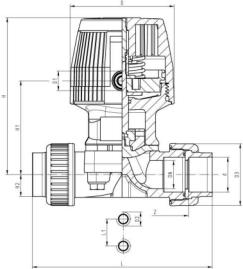
d [mm]	DN [mm]	PN	kv-value ($\Delta p=1$ bar) [l/min]	EPDM Code	EUR	kg
20	15	6	72	199 024 031	on request	0.580
25	20	6	120	199 024 032	on request	1.127
32	25	6	238	199 024 033	on request	1.381
40	32	6	341	199 024 034	on request	1.873
50	40	6	460	199 024 035	on request	2.687
63	50	6	685	199 024 036	on request	3.465

d [mm]	D [mm]	D1_G [inch]	D2 (M)	D3 [mm]	L [mm]	L1 [mm]	H [mm]	H1 [mm]	H2 [mm]	H3 [mm]	Lift = Hx [mm]	z [mm]
20	68	1/8	M6	43.0	128	25	99	59	14	44	8	96
25	96	1/8	M6	51.0	152	25	130	71	18	56	10	114
32	96	1/8	M6	58.0	166	25	143	85	21	56	12	122
40	120	1/8	M8	72.0	192	45	170	97	26	68	14	140
50	120	1/8	M8	83.0	222	45	182	109	33	68	16	160
63	120	1/8	M8	100.0	266	45	199	126	39	68	16	190

PF 3 39 212

PVC-U metric

Diaphragm valve DIASTAR Eco PVC-U FC (Fail safe to close) Unions with threaded sockets Rp



Model:

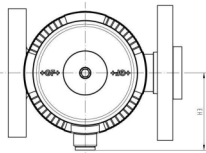
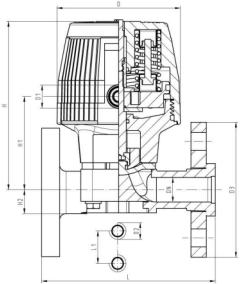
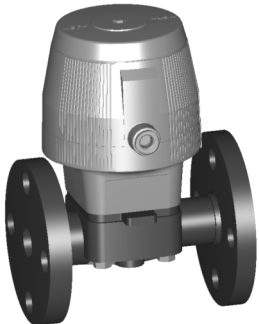
- Working pressure 6 bar one side

Rp [inch]	DN [mm]	PN	kv-value ($\Delta p=1$ bar) [l/min]	EPDM Code	EUR	kg
1/2	15	6	72	199 024 061	on request	0.582
3/4	20	6	120	199 024 062	on request	1.123
1	25	6	238	199 024 063	on request	1.383
1 1/4	32	6	341	199 024 064	on request	1.873
1 1/2	40	6	460	199 024 065	on request	2.699
2	50	6	685	199 024 066	on request	3.541

Rp [inch]	D [mm]	D1_G [inch]	D2 (M)	D3 [mm]	L [mm]	L1 [mm]	H [mm]	H1 [mm]	H2 [mm]	H3 [mm]	Lift = Hx [mm]	z [mm]
1/2	68	1/8	M6	43.0	128	25	99	59	14	44	8	102
3/4	96	1/8	M6	51.0	152	25	130	71	18	56	10	122
1	96	1/8	M6	58.0	166	25	143	85	21	56	12	132
1 1/4	120	1/8	M8	72.0	192	45	170	97	26	68	14	154
1 1/2	120	1/8	M8	83.0	222	45	182	109	33	68	16	184
2	120	1/8	M8	100.0	266	45	199	126	39	68	16	220

PF 3 39 212

Diaphragm valve DIASTAR Eco PVC-U FC (Fail safe to close) With backing flanges PVC-U metric



Model:

- Working pressure 6 bar one side

d [mm]	DN [mm]	Inch	PN	kv-value ($\Delta p=1$ bar) [l/min]	EPDM Code	EUR	kg
20	15	1/2	6	72	199 024 091	on request	0.553
25	20	3/4	6	120	199 024 092	on request	1.130
32	25	1	6	238	199 024 093	on request	1.414
40	32	1 1/4	6	341	199 024 094	on request	2.125
50	40	1 1/2	6	460	199 024 095	on request	3.063
63	50	2	6	685	199 024 096	on request	3.870

d [mm]	D [mm]	D1_G [inch]	D2 (M)	D3 [mm]	L [mm]	L1 [mm]	H [mm]	H1 [mm]	H2 [mm]	H3 [mm]	Lift = Hx [mm]
20	68	1/8	M6	95.0	130	25	99	59	14	44	8
25	96	1/8	M6	105.0	150	25	130	71	18	56	10
32	96	1/8	M6	115.0	160	25	143	85	21	56	12
40	120	1/8	M8	140.0	180	45	170	97	26	68	14
50	120	1/8	M8	150.0	200	45	182	109	33	68	16
63	120	1/8	M8	165.0	230	45	199	126	39	68	16

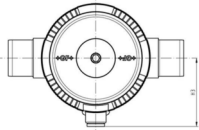
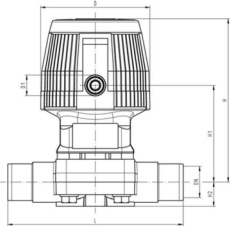
PF 3 39 212

PVC-C metric

Diaphragm valves pneumatic

Diaphragm valve DIASTAR Eco PVC-C FC (Fail safe to close)

With solvent cement spigots metric



Model:

- Working pressure 6 bar one side

d [mm]	DN [mm]	PN	kv-value ($\Delta p=1$ bar) [l/min]	EPDM Code	EUR	kg
20	15	6	72	199 024 121	on request	0.516
25	20	6	120	199 024 122	on request	1.043
32	25	6	238	199 024 123	on request	1.308
40	32	6	341	199 024 124	on request	1.936
50	40	6	460	199 024 125	on request	2.517
63	50	6	685	199 024 126	on request	3.011

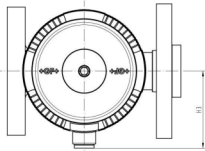
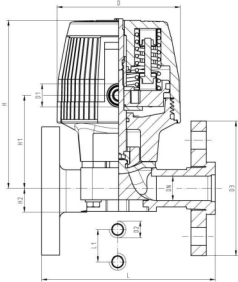
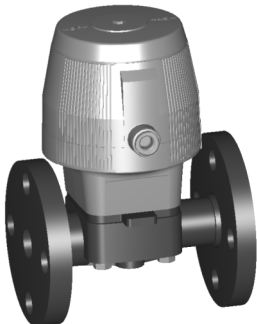
d [mm]	D [mm]	D1_G [inch]	D2 (M)	L [mm]	L1 [mm]	H [mm]	H1 [mm]	H2 [mm]	H3 [mm]	Lift = Hx [mm]
20	68	1/8	M6	124	25	99	59	14	44	8
25	96	1/8	M6	144	25	130	71	18	56	10
32	96	1/8	M6	154	25	143	85	21	56	12
40	120	1/8	M8	174	45	170	97	26	68	14
50	120	1/8	M8	194	45	182	109	33	68	16
63	120	1/8	M8	224	45	199	126	39	68	16

PF 3 39 212

Diaphragm valve DIASTAR Eco PVC-C

FC (Fail safe to close)

With backing flanges PP-V metric



Model:

- Working pressure 6 bar one side

d [mm]	DN [mm]	Inch	PN	kv-value ($\Delta p=1$ bar) [l/min]	EPDM Code	EUR	kg
20	15	1/2	6	72	199 024 151	on request	0.568
25	20	3/4	6	120	199 024 152	on request	1.155
32	25	1	6	238	199 024 153	on request	1.451
40	32	1 1/4	6	341	199 024 154	on request	2.185
50	40	1 1/2	6	460	199 024 155	on request	3.173
63	50	2	6	685	199 024 156	on request	4.028

d [mm]	D [mm]	D1_G [inch]	D2 (M)	D3 [mm]	L [mm]	L1 [mm]	H [mm]	H1 [mm]	H2 [mm]	H3 [mm]	Lift = Hx [mm]
20	68	1/8	M6	95.0	130	25	99	59	14	44	8
25	96	1/8	M6	105.0	150	25	130	71	18	56	10
32	96	1/8	M6	115.0	160	25	143	85	21	56	12
40	120	1/8	M8	140.0	180	45	170	97	26	68	14
50	120	1/8	M8	150.0	200	45	182	109	33	68	16
63	120	1/8	M8	165.0	230	45	199	126	39	68	16

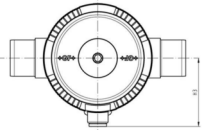
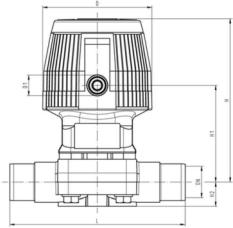
PF 3 39 212

ABS metric

Diaphragm valves pneumatic

Diaphragm valve type **DIASTAR Eco ABS FC (Fail safe to close)**

With solvent cement spigots metric



Model:

- Working pressure 6 bar one side

d [mm]	DN [mm]	PN	kv-value ($\Delta p=1$ bar) [l/min]	EPDM Code	EUR	kg
20	15	6	72	199 024 181	on request	0.510
25	20	6	120	199 024 182	on request	1.033
32	25	6	238	199 024 183	on request	1.291
40	32	6	341	199 024 184	on request	1.909
50	40	6	460	199 024 185	on request	2.477
63	50	6	685	199 024 186	on request	3.103

d [mm]	D [mm]	D1_G [inch]	D2 (M)	L [mm]	L1 [mm]	H [mm]	H1 [mm]	H2 [mm]	H3 [mm]	Lift = Hx [mm]
20	68	1/8	M6	124	25	99	59	14	44	8
25	96	1/8	M6	144	25	130	71	18	56	10
32	96	1/8	M6	154	25	143	85	21	56	12
40	120	1/8	M8	174	45	170	97	26	68	14
50	120	1/8	M8	194	45	182	109	33	68	16
63	120	1/8	M8	224	45	199	126	39	68	16

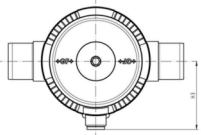
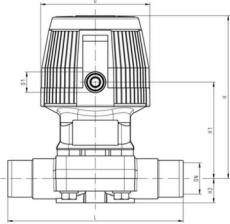
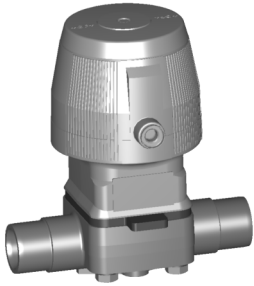
PF 3 39 212

PP-H metric

Diaphragm valves pneumatic

Diaphragm valve type DIASTAR Eco PP-H FC (Fail safe to close)

With socket fusion spigots metric



Model:

- Working pressure 6 bar one side

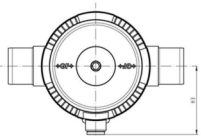
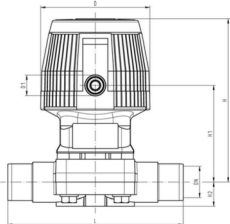
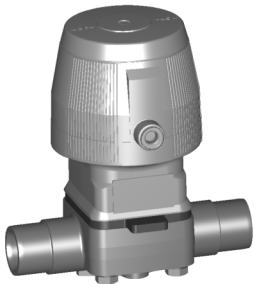
d [mm]	DN [mm]	Inch	PN	kv-value ($\Delta p=1$ bar) [l/min]	EPDM Code	EUR	kg
20	15	1/2	6	72	199 024 251	on request	0.486
25	20	3/4	6	120	199 024 252	on request	0.988
32	25	1	6	238	199 024 253	on request	1.202
40	32	1 1/4	6	341	199 024 254	on request	1.781
50	40	1 1/2	6	460	199 024 255	on request	2.296
63	50	2	6	685	199 024 256	on request	2.826

d [mm]	D [mm]	D1_G [inch]	D2 (M)	L [mm]	L1 [mm]	H [mm]	H1 [mm]	H2 [mm]	H3 [mm]	Lift = Hx [mm]
20	68	1/8	M6	124	25	99	59	14	44	8
25	96	1/8	M6	144	25	130	71	18	56	10
32	96	1/8	M6	154	25	143	85	21	56	12
40	120	1/8	M8	174	45	170	97	26	68	14
50	120	1/8	M8	194	45	182	109	33	68	16
63	120	1/8	M8	224	45	199	126	39	68	16

PF 3 39 212

Diaphragm valve type DIASTAR Eco PP-H FC (Fail safe to close)

With IR butt fusion spigots metric



Model:

- Working pressure 6 bar one side

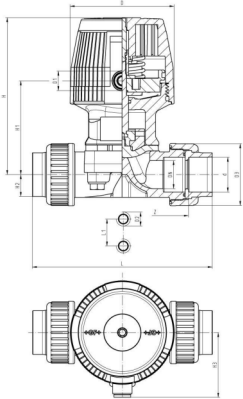
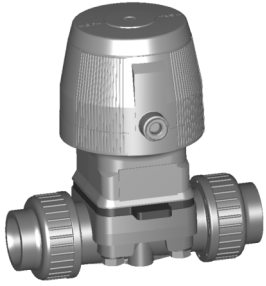
d [mm]	DN [mm]	Inch	PN	kv-value ($\Delta p=1$ bar) [l/min]	EPDM Code	EUR	kg
20	15	1/2	6	72	199 024 281	on request	0.481
25	20	3/4	6	120	199 024 282	on request	0.981
32	25	1	6	238	199 024 283	on request	1.195
40	32	1 1/4	6	341	199 024 284	on request	1.773
50	40	1 1/2	6	460	199 024 285	on request	2.272
63	50	2	6	685	199 024 286	on request	2.790

d [mm]	D [mm]	D1_G [inch]	D2 (M)	L [mm]	L1 [mm]	H [mm]	H1 [mm]	H2 [mm]	H3 [mm]	Lift = Hx [mm]
20	68	1/8	M6	124	25	99	59	14	44	8
25	96	1/8	M6	144	25	130	71	18	56	10
32	96	1/8	M6	154	25	143	85	21	56	12
40	120	1/8	M8	174	45	170	97	26	68	14
50	120	1/8	M8	194	45	182	109	33	68	16
63	120	1/8	M8	224	45	199	126	39	68	16

PF 3 39 212

PP-H metric

Diaphragm valve type DIASTAR Eco PP-H FC (Fail safe to close) Unions with fusion socket metric



Model:

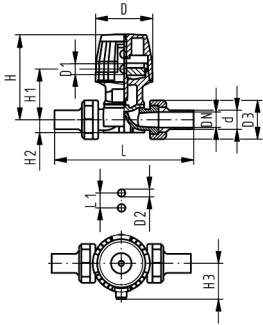
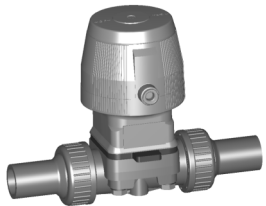
- Working pressure 6 bar one side

d [mm]	DN [mm]	Inch	PN	kv-value ($\Delta p=1$ bar) [l/min]	EPDM Code	EUR	kg						
20	15	1/2	6	72	199 024 311	on request	0.548						
25	20	3/4	6	120	199 024 312	on request	1.086						
32	25	1	6	238	199 024 313	on request	1.326						
40	32	1 1/4	6	341	199 024 314	on request	1.991						
50	40	1 1/2	6	460	199 024 315	on request	2.574						
63	50	2	6	685	199 024 316	on request	3.285						

d [mm]	D [mm]	D1_G [inch]	D2 (M)	D3 [mm]	L [mm]	L1 [mm]	H [mm]	H1 [mm]	H2 [mm]	H3 [mm]	Lift = Hx [mm]	z [mm]
20	68	1/8	M6	47.0	128	25	99	59	14	44	8	100
25	96	1/8	M6	57.0	150	25	130	71	18	56	10	118
32	96	1/8	M6	64.0	162	25	143	85	21	56	12	126
40	120	1/8	M8	78.0	184	45	170	97	26	68	14	144
50	120	1/8	M8	89.0	2210	45	182	109	33	68	16	164
63	120	1/8	M8	109.0	248	45	199	126	39	68	16	194

PF 3 39 212

Diaphragm valve type DIASTAR Eco PP-H FC (Fail safe to close) Unions with butt fusion spigot metric



Model:

- Working pressure 6 bar one side

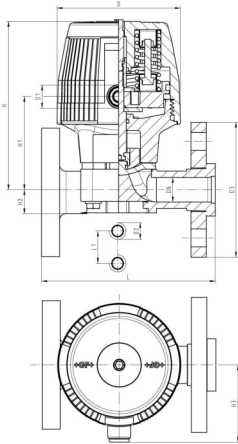
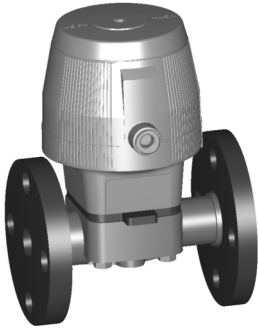
d [mm]	DN [mm]	Inch	PN	kv-value ($\Delta p=1$ bar) [l/min]	EPDM Code	EUR	kg						
20	15	1/2	6	72	199 024 341	on request	0.556						
25	20	3/4	6	120	199 024 342	on request	1.098						
32	25	1	6	238	199 024 343	on request	1.346						
40	32	1 1/4	6	341	199 024 344	on request	2.023						
50	40	1 1/2	6	460	199 024 345	on request	2.634						
63	50	2	6	685	199 024 346	on request	3.385						

d [mm]	D [mm]	D1_G [inch]	D2 (M)	D3 [mm]	L [mm]	L1 [mm]	H [mm]	H1 [mm]	H2 [mm]	H3 [mm]	Lift = Hx [mm]
20	68	1/8	M6	47.0	196	25	99	59	14	44	8
25	96	1/8	M6	57.0	221	25	130	71	18	56	10
32	96	1/8	M6	64.0	234	25	143	85	21	56	12
40	120	1/8	M8	78.0	260	45	170	97	26	68	14
50	120	1/8	M8	89.0	284	45	182	109	33	68	16
63	120	1/8	M8	109.0	321	45	199	126	39	68	16

PF 3 39 212

PP-H metric

Diaphragm valve type DIASTAR Eco PP-H FC (Fail safe to close) With backing flanges PP-V metric



Model:

- Working pressure 6 bar one side

d [mm]	DN [mm]	Inch	PN	kv-value ($\Delta p=1$ bar) [l/min]	EPDM Code	EUR	kg
20	15	1/2	6	72	199 024 371	on request	0.633
25	20	3/4	6	120	199 024 372	on request	1.150
32	25	1	6	238	199 024 373	on request	1.396
40	32	1 1/4	6	341	199 024 374	on request	2.185
50	40	1 1/2	6	460	199 024 375	on request	2.983
63	50	2	6	685	199 024 376	on request	3.708

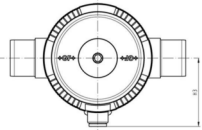
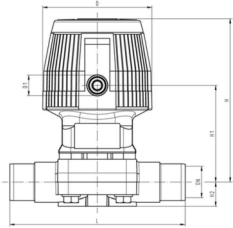
d [mm]	D [mm]	D1_G [inch]	D2 (M)	D3 [mm]	L [mm]	L1 [mm]	H [mm]	H1 [mm]	H2 [mm]	H3 [mm]	Lift = Hx [mm]
20	68	1/8	M6	95.0	130	25	99	59	14	44	8
25	96	1/8	M6	105.0	150	25	130	71	18	56	10
32	96	1/8	M6	115.0	160	25	143	85	21	56	12
40	120	1/8	M8	140.0	180	45	170	97	26	68	14
50	120	1/8	M8	150.0	200	45	182	109	33	68	16
63	120	1/8	M8	165.0	230	45	199	126	39	68	16

PF 3 39 212

PVC-U Inch BS

Diaphragm valves pneumatic

Diaphragm valve DIASTAR Eco PVC-U FC (Fail safe to close) With solvent cement spigots BS



Model:

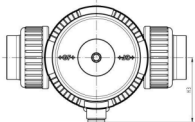
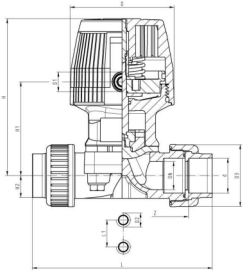
- Working pressure 6 bar one side

Inch	d [mm]	DN [mm]	PN	kv-value (Δp=1 bar) [l/min]	EPDM Code	EUR	kg
1/2	20	15	6	72	199 024 901	on request	0.514
3/4	25	20	6	120	199 024 902	on request	1.033
1	32	25	6	238	199 024 903	on request	1.272
1 1/4	40	32	6	341	199 024 904	on request	1.904
1 1/2	50	40	6	460	199 024 905	on request	2.443
2	63	50	6	685	199 024 906	on request	3.048

Inch	D [mm]	D1_G [inch]	D2 (M)	L [mm]	L1 [mm]	H [mm]	H1 [mm]	H2 [mm]	H3 [mm]	Lift = Hx [mm]
1/2	68	1/8	M6	124	25	99	59	14	44	8
3/4	96	1/8	M6	144	25	130	71	18	56	10
1	96	1/8	M6	154	25	143	85	21	56	12
1 1/4	120	1/8	M8	174	45	170	97	26	68	14
1 1/2	120	1/8	M8	194	45	182	109	33	68	16
2	120	1/8	M8	224	45	199	126	39	68	16

PF 3 39 212

Diaphragm valve DIASTAR Eco PVC-U FC (Fail safe to close) Unions with solvent cement socket BS



Model:

- Working pressure 6 bar one side

Inch	d [mm]	DN [mm]	PN	kv-value (Δp=1 bar) [l/min]	EPDM Code	EUR	kg
1/2	20	15	6	72	199 024 931	on request	0.578
3/4	25	20	6	120	199 024 932	on request	1.125
1	32	25	6	238	199 024 933	on request	1.379
1 1/4	40	32	6	341	199 024 934	on request	1.863
1 1/2	50	40	6	460	199 024 935	on request	2.695
2	63	50	6	685	199 024 936	on request	3.485

Inch	D [mm]	D1_G [inch]	D2 (M)	D3 [mm]	L [mm]	L1 [mm]	H [mm]	H1 [mm]	H2 [mm]	H3 [mm]	Lift = Hx [mm]	z [mm]
1/2	68	1/8	M6	43.0	128	25	99	59	14	44	8	96
3/4	96	1/8	M6	51.0	152	25	130	71	18	56	10	114
1	96	1/8	M6	58.0	166	25	143	85	21	56	12	122
1 1/4	120	1/8	M8	72.0	192	45	170	97	26	68	14	140
1 1/2	120	1/8	M8	83.0	222	45	182	109	33	68	16	160
2	120	1/8	M8	100.0	266	45	199	126	39	68	16	190

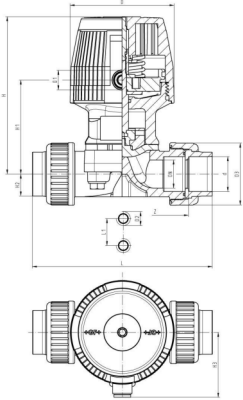
PF 3 39 212

PVC-U ASTM/ANSI

Diaphragm valves pneumatic

Diaphragm valve DIASTAR Eco PVC-U FC (Fail safe to close)

Unions with solvent cement socket ASTM



Model:

- Working pressure 6 bar one side

d [mm]	DN [mm]	Inch	PN	kv-value ($\Delta p=1$ bar) [l/min]	EPDM Code	EUR	kg
20	15	1/2	6	72	199 024 431	on request	0.580
25	20	3/4	6	120	199 024 432	on request	1.129
32	25	1	6	238	199 024 433	on request	1.385
40	32	1 1/4	6	341	199 024 434	on request	1.871
50	40	1 1/2	6	460	199 024 435	on request	2.713
63	50	2	6	685	199 024 436	on request	3.497

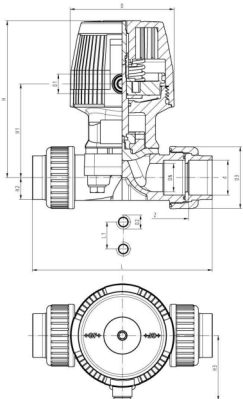
d [mm]	D [mm]	D1_G [inch]	D2 (M)	D3 [mm]	L [mm]	L1 [mm]	H [mm]	H1 [mm]	H2 [mm]	H3 [mm]	Lift = Hx [mm]	z [mm]
20	68	1/8	M6	43.0	136	25	99	59	14	44	8	96
25	96	1/8	M6	51.0	160	25	130	71	18	56	10	114
32	96	1/8	M6	58.0	176	25	143	85	21	56	12	122
40	120	1/8	M8	72.0	199	45	170	97	26	68	14	140
50	120	1/8	M8	83.0	232	45	182	109	33	68	16	160
63	120	1/8	M8	100.0	268	45	199	126	39	68	16	190

PF 3 39 212

Diaphragm valve DIASTAR Eco PVC-U

FC (Fail safe to close)

Unions with threaded socket NPT



Model:

- Working pressure 6 bar one side

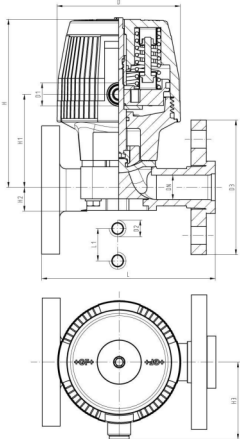
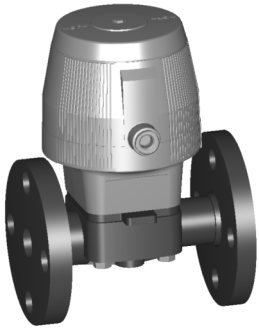
d [mm]	DN [mm]	Inch	PN	kv-value ($\Delta p=1$ bar) [l/min]	EPDM Code	EUR	kg
20	15	1/2	6	72	199 024 461	on request	0.578
25	20	3/4	6	120	199 024 462	on request	1.129
32	25	1	6	238	199 024 463	on request	1.385
40	32	1 1/4	6	341	199 024 464	on request	1.877
50	40	1 1/2	6	460	199 024 465	on request	2.725
63	50	2	6	685	199 024 466	on request	3.577

d [mm]	D [mm]	D1_G [inch]	D2 (M)	D3 [mm]	L [mm]	L1 [mm]	H [mm]	H1 [mm]	H2 [mm]	H3 [mm]	Lift = Hx [mm]	z [mm]
20	68	1/8	M6	43.0	136	25	99	59	14	44	8	96
25	96	1/8	M6	51.0	160	25	130	71	18	56	10	114
32	96	1/8	M6	58.0	176	25	143	85	21	56	12	122
40	120	1/8	M8	72.0	199	45	170	97	26	68	14	140
50	120	1/8	M8	83.0	232	45	182	109	33	68	16	160
63	120	1/8	M8	100.0	268	45	199	126	39	68	16	190

PF 3 39 212

PVC-U ASTM/ANSI

Diaphragm valve DIASTAR Eco PVC-U FC (Fail safe to close) With backing flanges PVC-U ANSI



Model:

- Working pressure 6 bar one side

d [mm]	DN [mm]	Inch	PN	kv-value ($\Delta p=1$ bar) [l/min]	EPDM Code	EUR	kg
20	15	1/2	6	72	199 024 491	on request	0.669
25	20	3/4	6	120	199 024 492	on request	1.243
32	25	1	6	238	199 024 493	on request	1.575
40	32	1 1/4	6	341	199 024 494	on request	2.394
50	40	1 1/2	6	460	199 024 495	on request	3.087
63	50	2	6	685	199 024 496	on request	3.918

d [mm]	D [mm]	D1_G [inch]	D2 (M)	D3 [mm]	L [mm]	L1 [mm]	H [mm]	H1 [mm]	H2 [mm]	H3 [mm]	Lift = Hx [mm]
20	68	1/8	M6	95.0	130	25	99	59	14	44	8
25	96	1/8	M6	105.0	150	25	130	71	18	56	10
32	96	1/8	M6	115.0	160	25	143	85	21	56	12
40	120	1/8	M8	140.0	180	45	170	97	26	68	14
50	120	1/8	M8	150.0	200	45	182	109	33	68	16
63	120	1/8	M8	165.0	230	45	199	126	39	68	16

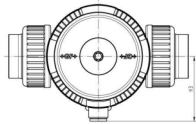
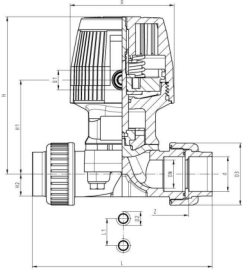
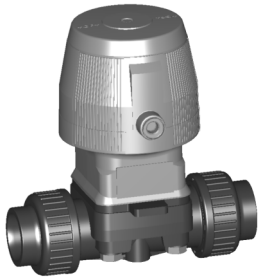
PF 3 39 212

PVC-U JIS

Diaphragm valves pneumatic

Diaphragm valve DIASTAR Eco PVC-U FC (Fail safe to close)

Unions with solvent cement socket



Model:

- Working pressure 6 bar one side

d [mm]	DN [mm]	Inch	PN	kv-value ($\Delta p=1$ bar) [l/min]	EPDM Code	EUR	kg
20	15	1/2	6	72	199 024 701	on request	0.566
25	20	3/4	6	120	199 024 702	on request	1.127
32	25	1	6	238	199 024 703	on request	1.383
40	32	1 1/4	6	341	199 024 704	on request	1.881
50	40	1 1/2	6	460	199 024 705	on request	2.709
63	50	2	6	685	199 024 706	on request	3.505

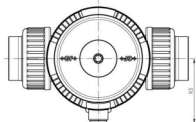
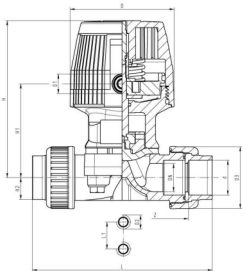
d [mm]	D [mm]	D1_G [inch]	D2 (M)	D3 [mm]	L [mm]	L1 [mm]	H [mm]	H1 [mm]	H2 [mm]	H3 [mm]	Lift = Hx [mm]	z [mm]
20	96	1/8	M6	51.0	128	25	130	71	18	56	10	114
25	96	1/8	M6	51.0	152	25	130	71	18	56	10	120
32	96	1/8	M6	58.0	166	25	143	85	21	56	12	122
40	120	1/8	M8	72.0	192	45	170	97	26	68	14	140
50	120	1/8	M8	83.0	222	45	182	109	33	68	16	160
63	120	1/8	M8	100.0	266	45	199	126	39	68	16	190

PF 3 39 212

Diaphragm valve DIASTAR Eco PVC-U

FC (Fail safe to close)

Unions with threaded socket Rc



Model:

- Working pressure 6 bar one side

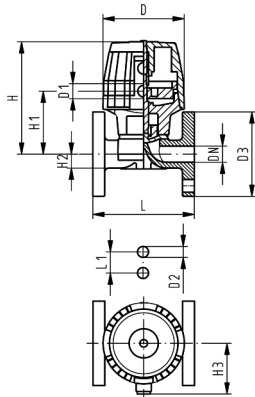
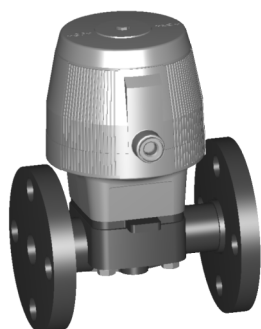
d [mm]	DN [mm]	Inch	PN	kv-value ($\Delta p=1$ bar) [l/min]	EPDM Code	EUR	kg
20	15	1/2	6	72	199 024 731	on request	0.604
25	20	3/4	6	120	199 024 732	on request	1.129
32	25	1	6	238	199 024 733	on request	1.385
40	32	1 1/4	6	341	199 024 734	on request	1.877
50	40	1 1/2	6	460	199 024 735	on request	2.727
63	50	2	6	685	199 024 736	on request	3.577

d [mm]	D [mm]	D1_G [inch]	D2 (M)	D3 [mm]	L [mm]	L1 [mm]	H [mm]	H1 [mm]	H2 [mm]	H3 [mm]	Lift = Hx [mm]
20	96	1/8	M6	51.0	136	25	130	71	18	56	10
25	96	1/8	M6	51.0	160	25	130	71	18	56	10
32	96	1/8	M6	58.0	176	25	143	85	21	56	12
40	120	1/8	M8	72.0	199	45	170	97	26	68	14
50	120	1/8	M8	83.0	232	45	182	109	33	68	16
63	120	1/8	M8	100.0	268	45	199	126	39	68	16

PF 3 39 212

PVC-U JIS

Diaphragm valve DIASTAR Eco PVC-U FC (Fail safe to close) With flanges PVC-U JIS



Model:

- Working pressure 6 bar one side

d [mm]	DN [mm]	Inch	PN	kv-value ($\Delta p=1$ bar) [l/min]	EPDM Code	EUR	kg
20	15	1/2	6	72	199 024 761	on request	0.765
25	20	3/4	6	120	199 024 762	on request	1.300
32	25	1	6	238	199 024 763	on request	1.676
40	32	1 1/4	6	341	199 024 764	on request	2.513
50	40	1 1/2	6	460	199 024 765	on request	3.093
63	50	2	6	685	199 024 766	on request	3.918

d [mm]	D [mm]	D1_G [inch]	D2 (M)	D3 [mm]	L [mm]	L1 [mm]	H [mm]	H1 [mm]	H2 [mm]	H3 [mm]	Lift = Hx [mm]
20	68	1/8	M6	95.0	110	25	99	59	14	44	8
25	96	1/8	M6	105.0	120	25	130	71	18	56	10
32	96	1/8	M6	115.0	130	25	143	85	21	56	12
40	120	1/8	M8	140.0	180	45	170	97	26	68	14
50	120	1/8	M8	150.0	180	45	182	109	33	68	16
63	120	1/8	M8	165.0	210	45	199	126	39	68	16

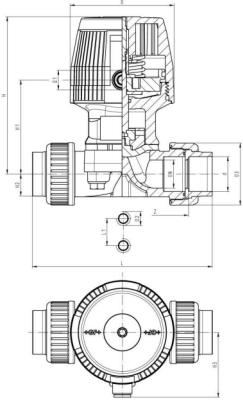
PF 3 39 212

PVC-U JIS oil-free

Diaphragm valves pneumatic

Diaphragm valve DIASTAR Eco PVC-U OF FC (Fail safe to close)

Unions with solvent cement socket



PF 3 39 212

Model:

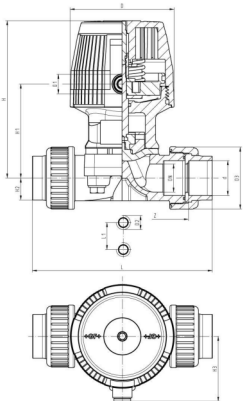
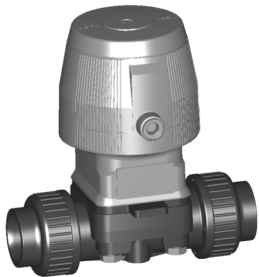
- Oil free
- Working pressure 6 bar one side

d [mm]	DN [mm]	Inch	PN	kv-value ($\Delta p=1$ bar) [l/min]	EPDM Code	EUR	kg
20	15	1/2	6	72	199 024 711	on request	0.566
25	20	3/4	6	120	199 024 712	on request	1.127
32	25	1	6	238	199 024 713	on request	1.383
40	32	1 1/4	6	341	199 024 714	on request	1.881
50	40	1 1/2	6	460	199 024 715	on request	2.709
63	50	2	6	685	199 024 716	on request	3.505

d [mm]	D [mm]	D1_G [inch]	D2 (M)	D3 [mm]	L [mm]	L1 [mm]	H [mm]	H1 [mm]	H2 [mm]	H3 [mm]	Lift = Hx [mm]	z [mm]
20	96	3/8	M6	51.0	128	25	130	71	18	56	10	114
25	96	3/8	M6	51.0	152	25	130	71	18	56	10	120
32	96	3/8	M6	58.0	166	25	143	85	21	56	12	122
40	120	1/2	M8	72.0	192	45	170	97	26	68	14	140
50	120	1/2	M8	83.0	222	45	182	109	33	68	16	160
63	120	1/2	M8	100.0	266	45	199	126	39	68	16	190

Diaphragm valve DIASTAR Eco PVC-U OF FC (Fail safe to close)

Unions with threaded socket Rc



PF 3 39 212

Model:

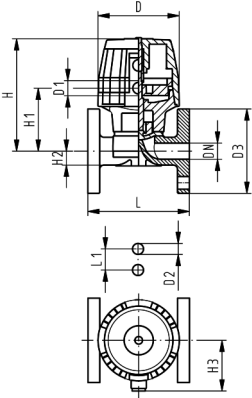
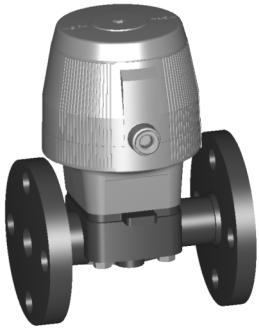
- Oil free
- Working pressure 6 bar one side

d [mm]	DN [mm]	Inch	PN	kv-value ($\Delta p=1$ bar) [l/min]	EPDM Code	EUR	kg
20	15	1/2	6	72	199 024 741	on request	0.604
25	20	3/4	6	120	199 024 742	on request	1.129
32	25	1	6	238	199 024 743	on request	1.385
40	32	1 1/4	6	341	199 024 744	on request	1.877
50	40	1 1/2	6	460	199 024 745	on request	2.727
63	50	2	6	685	199 024 746	on request	3.577

d [mm]	D [mm]	D1_G [inch]	D2 (M)	D3 [mm]	L [mm]	L1 [mm]	H [mm]	H1 [mm]	H2 [mm]	H3 [mm]	Lift = Hx [mm]
20	96	3/8	M6	51.0	136	25	130	71	18	56	10
25	96	3/8	M6	51.0	160	25	130	71	18	56	10
32	96	3/8	M6	58.0	176	25	143	85	21	56	12
40	120	1/2	M8	72.0	199	45	170	97	26	68	14
50	120	1/2	M8	83.0	232	45	182	109	33	68	16
63	120	1/2	M8	100.0	268	45	199	126	39	68	16

PVC-U JIS oil-free

Diaphragm valve DIASTAR Eco PVC-U OF FC (Fail safe to close) With flanges PVC-U JIS



Model:

- Oil free
- Working pressure 6 bar one side

d [mm]	DN [mm]	Inch	PN	kv-value ($\Delta p=1$ bar) [l/min]	EPDM Code	EUR	kg
20	15	1/2	6	72	199 024 771	on request	0.765
25	20	3/4	6	120	199 024 772	on request	1.300
32	25	1	6	238	199 024 773	on request	1.676
40	32	1 1/4	6	341	199 024 774	on request	2.513
50	40	1 1/2	6	460	199 024 775	on request	3.093
63	50	2	6	685	199 024 776	on request	3.918

d [mm]	D [mm]	D1_G [inch]	D2 (M)	D3 [mm]	L [mm]	L1 [mm]	H [mm]	H1 [mm]	H2 [mm]	H3 [mm]	Lift = Hx [mm]
20	68	1/8	M6	95.0	110	25	99	59	14	44	8
25	96	1/8	M6	105.0	120	25	130	71	18	56	10
32	96	1/8	M6	115.0	130	25	143	85	21	56	12
40	120	1/8	M8	140.0	180	45	170	97	26	68	14
50	120	1/8	M8	150.0	180	45	182	109	33	68	16
63	120	1/8	M8	165.0	210	45	199	126	39	68	16

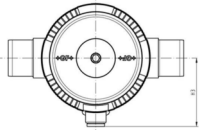
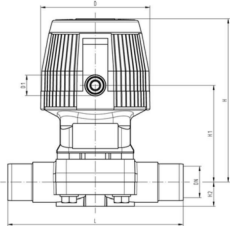
PF 3 39 212

PVC-C ASTM/ANSI

Diaphragm valves pneumatic

Diaphragm valve DIASTAR Eco PVC-C FC (Fail safe to close)

With solvent cement spigots



Model:

- Working pressure 6 bar one side

d [mm]	DN [mm]	Inch	PN	kv-value ($\Delta p=1$ bar) [l/min]	EPDM Code	EUR	kg
20	15	1/2	6	72	199 024 521	on request	0.523
25	20	3/4	6	120	199 024 522	on request	1.050
32	25	1	6	238	199 024 523	on request	1.291
40	32	1 1/4	6	341	199 024 524	on request	1.909
50	40	1 1/2	6	460	199 024 525	on request	2.498
63	50	2	6	685	199 024 526	on request	3.124

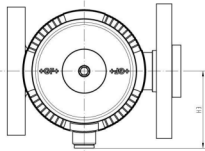
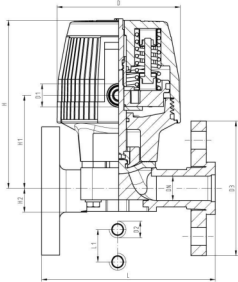
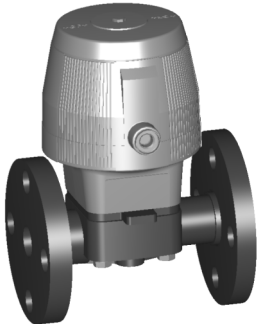
d [mm]	D [mm]	D1_G [inch]	D2 (M)	L [mm]	L1 [mm]	H [mm]	H1 [mm]	H2 [mm]	H3 [mm]	Lift = Hx [mm]
20	68	1/8	M6	142	25	99	59	14	44	8
25	96	1/8	M6	160	25	130	71	18	56	10
32	96	1/8	M6	174	25	143	85	21	56	12
40	120	1/8	M8	188	45	170	97	26	68	14
50	120	1/8	M8	205	45	182	109	33	68	16
63	120	1/8	M8	225	45	199	126	39	68	16

PF 3 39 212

Diaphragm valve DIASTAR Eco PVC-C

FC (Fail safe to close)

With backing flanges PP-V ANSI



Model:

- Working pressure 6 bar one side

d [mm]	DN [mm]	Inch	PN	kv-value ($\Delta p=1$ bar) [l/min]	EPDM Code	EUR	kg
20	15	1/2	6	72	199 024 551	on request	0.698
25	20	3/4	6	120	199 024 552	on request	1.281
32	25	1	6	238	199 024 553	on request	1.644
40	32	1 1/4	6	341	199 024 554	on request	2.456
50	40	1 1/2	6	460	199 024 555	on request	3.043
63	50	2	6	685	199 024 556	on request	3.951

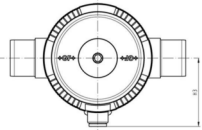
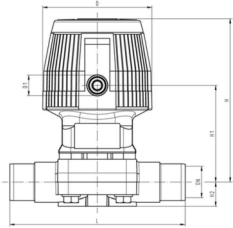
d [mm]	D [mm]	D1_G [inch]	D2 (M)	D3 [mm]	L [mm]	L1 [mm]	H [mm]	H1 [mm]	H2 [mm]	H3 [mm]	Lift = Hx [mm]
20	68	1/8	M6	95.0	130	25	99	59	14	44	8
25	96	1/8	M6	105.0	150	25	130	71	18	56	10
32	96	1/8	M6	115.0	160	25	143	85	21	56	12
40	120	1/8	M8	140.0	180	45	170	97	26	68	14
50	120	1/8	M8	150.0	200	45	182	109	33	68	16
63	120	1/8	M8	165.0	230	45	199	126	39	68	16

PF 3 39 212

ABS Inch BS

Diaphragm valves pneumatic

Diaphragm valve type **DIASTAR Eco ABS FC (Fail safe to close)**
With solvent cement spigots BS



Model:

- Working pressure 6 bar one side

Inch	d [mm]	DN [mm]	PN	kv-value ($\Delta p=1$ bar) [l/min]	EPDM Code	EUR	kg				
1/2	20	15	6	72	199 024 961	on request	0.492				
3/4	25	20	6	120	199 024 962	on request	1.002				
1	32	25	6	238	199 024 963	on request	1.241				
1 1/4	40	32	6	341	199 024 964	on request	1.829				
1 1/2	50	40	6	460	199 024 965	on request	2.356				
2	63	50	6	685	199 024 966	on request	2.801				

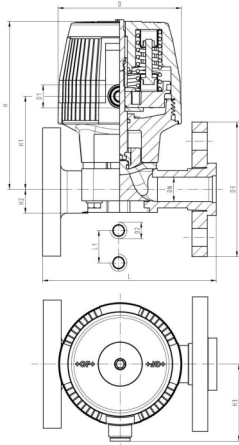
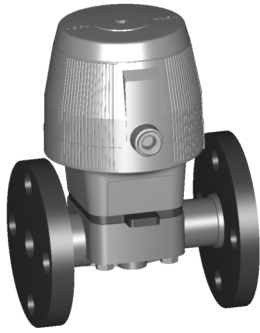
Inch	D [mm]	D1_G [inch]	D2 (M)	L [mm]	L1 [mm]	H [mm]	H1 [mm]	H2 [mm]	H3 [mm]	Lift = Hx [mm]	
1/2	68	1/8	M6	124	25	99	59	14	44	8	
3/4	96	1/8	M6	144	25	130	71	18	56	10	
1	96	1/8	M6	154	25	143	85	21	56	12	
1 1/4	120	1/8	M8	174	45	170	97	26	68	14	
1 1/2	120	1/8	M8	194	45	182	109	33	68	16	
2	120	1/8	M8	224	45	199	126	39	68	16	

PF 3 39 212

PP-H ASTM

Diaphragm valves pneumatic

Diaphragm valve type **DIASTAR Eco PP-H**
FC (Fail safe to close)
With backing flanges PP-V



Model:

- Working pressure 6 bar one side

d [mm]	DN [mm]	Inch	PN	kv-value ($\Delta p=1$ bar) [l/min]	EPDM Code	EUR	kg
20	15	1/2	6	72	199 024 581	on request	0.668
25	20	3/4	6	120	199 024 582	on request	1.232
32	25	1	6	238	199 024 583	on request	1.548
40	32	1 1/4	6	341	199 024 584	on request	2.313
50	40	1 1/2	6	460	199 024 585	on request	2.840
63	50	2	6	685	199 024 586	on request	3.766

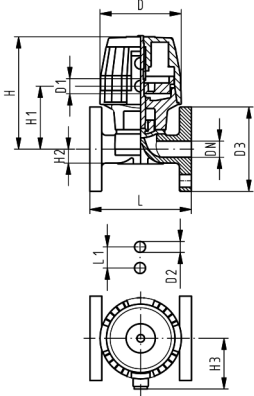
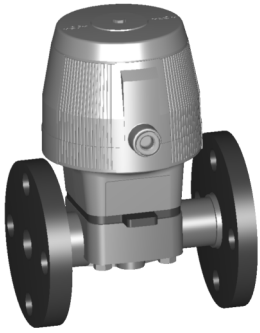
d [mm]	D [mm]	D1_G [inch]	D2 (M)	D3 [mm]	L [mm]	L1 [mm]	H [mm]	H1 [mm]	H2 [mm]	H3 [mm]	Lift = Hx [mm]
20	68	1/8	M6	95.0	130	25	99	59	14	44	8
25	96	1/8	M6	105.0	150	25	130	71	18	56	10
32	96	1/8	M6	115.0	160	25	143	85	21	56	12
40	120	1/8	M8	140.0	180	45	170	97	26	68	14
50	120	1/8	M8	150.0	200	45	182	109	33	68	16
63	120	1/8	M8	165.0	230	45	199	126	39	68	16

PF 3 39 212

PP-H JIS

Diaphragm valves pneumatic

Diaphragm valve type DIASTAR Eco PP-H FC (Fail safe to close) With flanges PP JIS



Model:

- Working pressure 6 bar one side

d [mm]	DN [mm]	Inch	PN	kv-value ($\Delta p=1$ bar) [l/min]	EPDM Code	EUR	kg					
20	15	1/2	6	72	199 024 791	on request	0.668					
25	20	3/4	6	120	199 024 792	on request	1.185					
32	25	1	6	238	199 024 793	on request	1.502					
40	32	1 1/4	6	341	199 024 794	on request	2.240					
50	40	1 1/2	6	460	199 024 795	on request	2.763					
63	50	2	6	685	199 024 796	on request	3.443					

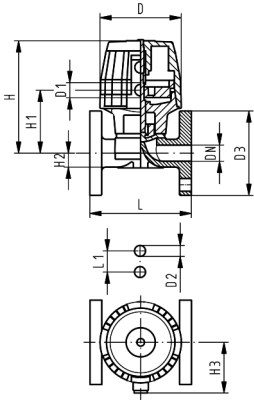
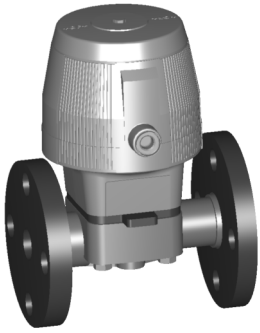
d [mm]	D [mm]	D1_G [inch]	D2 (M)	D3 [mm]	L [mm]	L1 [mm]	H [mm]	H1 [mm]	H2 [mm]	H3 [mm]	Lift = Hx [mm]		
20	68	1/8	M6	95.0	110	25	99	59	14	44	8		
25	96	1/8	M6	105.0	120	25	130	71	18	56	10		
32	96	1/8	M6	115.0	130	25	143	85	21	56	12		
40	120	1/8	M8	140.0	180	45	170	97	26	68	14		
50	120	1/8	M8	150.0	180	45	182	109	33	68	16		
63	120	1/8	M8	165.0	210	45	199	126	39	68	16		

PF 3 39 212

PROGEF® Plus JIS

Diaphragm valves pneumatic

PROGEF® Plus oil free
Diaphragm valve type DIASTAR Eco PP-H (
FC (Fail safe to close)
With flanges PP JIS



Model:

- Oil free
- Working pressure 6 bar one side

d [mm]	DN [mm]	Inch	PN	kv-value ($\Delta p=1$ bar) [l/min]	EPDM Code	EUR	kg	
20	15	1/2	6	72	199 024 801	on request	0.668	
25	20	3/4	6	120	199 024 802	on request	1.185	
32	25	1	6	238	199 024 803	on request	1.502	
40	32	1 1/4	6	341	199 024 804	on request	2.240	
50	40	1 1/2	6	460	199 024 805	on request	2.763	
63	50	2	6	685	199 024 806	on request	3.443	

d [mm]	D [mm]	D1_G [inch]	D2 (M)	D3 [mm]	L [mm]	L1 [mm]	H [mm]	H1 [mm]	H2 [mm]	H3 [mm]	Lift = Hx [mm]
20	68	1/8	M6	95.0	110	25	99	59	14	44	8
25	96	1/8	M6	105.0	120	25	130	71	18	56	10
32	96	1/8	M6	115.0	130	25	143	85	21	56	12
40	120	1/8	M8	140.0	180	45	170	97	26	68	14
50	120	1/8	M8	150.0	180	45	182	109	33	68	16
63	120	1/8	M8	165.0	210	45	199	126	39	68	16

PF 3 39 212